

**TOWN OF SHARON, MASSACHUSETTS
WELLS 2, 3 AND 4 WATER TREATMENT PLANT**

TABLE OF CONTENTS

Section	Title
<u>DIVISION 0 – BIDDING AND CONTRACT REQUIREMENTS</u>	
00020 Invitation to Bid
00100 Instruction to Bidders
00100.1 Supplemental Instructions to Bidders for Electronic Bid Projects
00301 Bid Form
00301.1 Cash Bid Bond Affidavit
00301.2 DWSRF Appendix A2 - Contractor Certification Statement
00480 Form of Non-Collusive Affidavit
00481 Certificate of Corporate Vote
00482 Certificate as to Payment of State Taxes
00483 OSHA 10 Hour Training
00500 Agreement
00550 Notices (Award, Proceed)
00610 Performance Bond
00620 Payment Bond
00700 General Conditions of the Contract
00800 Supplemental Conditions
<u>DIVISION 1 – GENERAL REQUIREMENTS</u>	
01010 Summary of Work
01024 Measurement and Payment
01040 Project Coordination
01045 Cutting, Coring and Patching
01046 Control of Work
01050 Field Engineering
01063 Miscellaneous Requirements
01095 Reference Standards and Definitions
01110 Environmental Protection Procedures
01170 Special Provisions
01200 Project Meetings
01300 Submittals
01311 Construction Progress Schedules
01350 Health and Safety Plan
01370 Schedule of Values
01400 Quality Assurance
01500 Temporary Facilities and Controls
01600 Control of Materials
01610 Delivery, Storage and Handling
01620 Identification Systems (Project Signs)
01650 Facility Start-Up/Commissioning
01700 Contract Closeout
01710 Cleaning Up

**TOWN OF SHARON, MASSACHUSETTS
WELLS 2, 3 AND 4 WATER TREATMENT PLANT**

TABLE OF CONTENTS

Section	Title
01730	Operation and Maintenance Data
01740	Warranties and Bonds
01900	Selective Demolition

DIVISION 2 – SITE WORK

02020	Erosion and Sediment Control
02050	Tree Protection and Trimming
02060	Site Clearing
02140	Dewatering and Discharge
02160	Temporary Excavation Support Systems
02200	Earthwork
02211	Rough Grading
02273	Geotextile Fabric
02444	Chain Link Fence
02513	Bituminous Concrete Pavement
02532	Bituminous Tack Coat
02550	Signage
02570	Precast Manholes, Drywells, and Appurtenances
02615	Ductile Iron Pipe and Fittings
02640	Fire Hydrants, Valves, and Appurtenances
02673	Well Reconditioning
02830	Guardrail
02832	Segmental Retaining Walls
02901	Miscellaneous Work and Cleanup
02920	Topsoil
02945	Turf
02950	Planting

DIVISION 3 – CONCRETE

03300	Cast-In-Place Concrete
03410	Plant Precast Structural Concrete
03450	Architectural Precast Concrete (Masonry Filed Sub-Bid Required)

DIVISION 4 – MASONRY

04001	Masonry (Filed Sub-Bid Required)
04810	Unit Masonry (Masonry Filed Sub-Bid Required)

DIVISION 5 – METALS

05001	Miscellaneous and Ornamental Iron (Filed Sub-Bid Required)
05400	Cold Formed Metal Framing
05500	Metal Fabrications (Miscellaneous and Ornamental Iron Filed Sub-Bid Required)

**TOWN OF SHARON, MASSACHUSETTS
WELLS 2, 3 AND 4 WATER TREATMENT PLANT**

TABLE OF CONTENTS

Section	Title
 <u>DIVISION 6 – WOOD AND PLASTICS</u>	
06105	Miscellaneous Rough Carpentry
06400	Architectural Woodwork
06741	FRP Fabrications
 <u>DIVISION 7 – THERMAL AND MOISTURE PROTECTION</u>	
07001	Waterproofing, Damp-Proofing, and Caulking (Filed Sub-Bid Required)
07131	Self-Adhering Sheet Waterproofing (Waterproofing, Damp-Proofing, and Caulking Filed Sub-Bid Required)
07210	Thermal Insulation
07440	Concrete Faced Insulated Panels
07620	Sheet Metal Flashing and Trim
07841	Penetration Firestopping
07920	Joint Sealants (Waterproofing, Damp-Proofing, and Caulking Filed Sub-Bid Required)
 <u>DIVISION 8 – DOORS AND WINDOWS</u>	
08120	Hollow Metal Frames
08161	FRP Flush Doors
08331	Overhead Coiling Doors
08348	Floor Doors
08513	Aluminum Windows
08710	Door Hardware
08800	Glazing
08950	Fiberglass-Sandwich-Panel Assemblies
 <u>DIVISION 9 – FINISHES</u>	
09001	Painting (Filed Sub-Bid Required)
09111	Non-Load Bearing Steel Framing
09511	Acoustical Panel Ceilings
09653	Resilient Base
09900	Painting and Coatings (Painting Filed Sub-Bid Required)
09901	Shop Primers
 <u>DIVISION 10 – SPECIALTIES</u>	
10140	Signage
10200	Fixed Louvers
10800	Toilet and Bath Accessories

**TOWN OF SHARON, MASSACHUSETTS
WELLS 2, 3 AND 4 WATER TREATMENT PLANT**

TABLE OF CONTENTS

Section	Title
----------------	--------------

DIVISION 11 – EQUIPMENT

11200	Interior Process Piping and Valves
11201	Iron and Manganese Removal System
11202	PFAS Removal System
11203	Granular Activated Carbon
11204	Ion Exchange Resin
11241	Chemical Metering Pumps
11280	Gates and Weirs
11310	Vertical Turbine Pumps
11311	End Suction Pumps
11312	Multi-Stage In-Line Vertical Pumps
11313	Chemical Transfer Pumps
11371	Vacuum Priming System
11377	Rotary Positive Displacement Blower
11501	Process Gauges

DIVISION 12 – FURNISHINGS

12350	Laboratory Casework
12500	Window Treatments

DIVISION 13 – SPECIAL CONSTRUCTION

13100	Computers and Miscellaneous Equipment
13120	Metal Building Systems
13200	Programmable Logic Controllers
13201	Disinfection of Water Systems
13215	Chemical Storage Tanks
13320	Instrumentation and Controls
13325	Process Instrumentation and Control Products
13400	Supervisory Control and Data Acquisition (SCADA) System
13420	Control System Equipment Panels and Racks
13465	Sequence of Operations

DIVISION 15 – MECHANICAL

15001	Plumbing (Filed Sub-Bid Required)
15002	Heating, Ventilation, and Air Conditioning (HVAC) (Filed Sub-Bid Required)
15003	Fire Protection (Filed Sub-Bid Required)
15195	Natural Gas Piping System (Plumbing Filed Sub-Bid Required)
15300	Fire Protection (Fire Protection Filed Sub-Bid Required)
15400	Plumbing (Plumbing Filed Sub-Bid Required)
15500	Heating, Ventilation, and Air Conditioning (HVAC) (Heating, Ventilation, and Air Conditioning Filed Sub-Bid Required)

**TOWN OF SHARON, MASSACHUSETTS
WELLS 2, 3 AND 4 WATER TREATMENT PLANT**

TABLE OF CONTENTS

Section	Title
15900	Laboratory Fume Hoods (Heating, Ventilation, and Air Conditioning Filed Sub-Bid Required)
<u>DIVISION 16 – ELECTRICAL</u>	
16001	Electrical (Filed Sub-Bid Required)
16050	Electrical General Conditions (Electrical Work Filed Sub-Bid Required)
16060	Grounding Systems (Electrical Work Filed Sub-Bid Required)
16080	Underground Systems (Electrical Work Filed Sub-Bid Required)
16085	Miscellaneous Equipment (Electrical Work Filed Sub-Bid Required)
16120	Wire and Cables (Electrical Work Filed Sub-Bid Required)
16130	Raceways and Fittings (Electrical Work Filed Sub-Bid Required)
16442	Panelboards (Electrical Work Filed Sub-Bid Required)
16443	Motor Control Centers (Electrical Work Filed Sub-Bid Required)
16495	Variable Frequency Drives (Electrical Work Filed Sub-Bid Required)
16500	Lighting System (Electrical Work Filed Sub-Bid Required)
16601	Lightning Protection System (Electrical Work Filed Sub-Bid Required)
16612	Engine Generator (Electrical Work Filed Sub-Bid Required)
16650	Photovoltaic Power System (Electrical Work Filed Sub-Bid Required)
16721	Fire Alarm System (Electrical Work Filed Sub-Bid Required)
16722	Manual Alarm System (Electrical Work Filed Sub-Bid Required)
16740	Communication System (Electrical Work Filed Sub-Bid Required)

**TOWN OF SHARON, MASSACHUSETTS
WELLS 2, 3 AND 4 WATER TREATMENT PLANT**

TABLE OF CONTENTS

Section **Title**

LIST OF APPENDICES

Appendix A	Massachusetts State Prevailing Wage Rates
Appendix B	Davis Bacon Act Requirements
Appendix C	Massachusetts General Laws
Appendix D	Boring Logs and Geotechnical Reports
Appendix E	Massachusetts DEP Permit Approval
Appendix F	Order of Conditions
Appendix G	Site Plan Review Approval
Appendix H	MassDEP Certification for Generator
Appendix I	DWSRF Construction Stage Loan Application Paperwork
Appendix J	Massachusetts COVID-19 Guidelines
Appendix K	Well Stations Hazardous Waste Building Materials Survey Report
Appendix L	Well Station Record Drawings
Appendix M	Well Station Instrumentation Photos
Appendix N	DCAMM Updated Statement

GENERAL PROJECT INFORMATION:

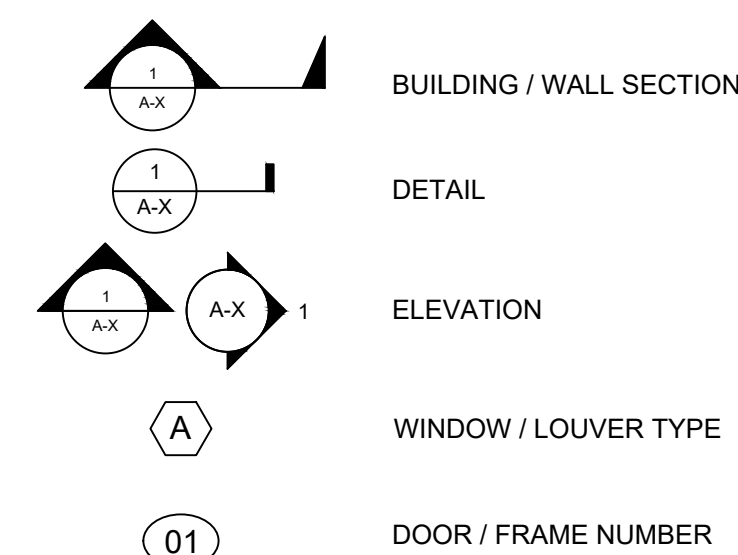
GENERAL NOTES:

- ALL WORK SHALL BE IN COMPLIANCE WITH APPLICABLE LOCAL, STATE, AND FEDERAL REGULATIONS (TYP.).
- SEE SHEET S-X FOR DESIGN LOADS AND METAL BUILDING SYSTEM REQUIREMENTS (TYP.).
- SEE STRUCTURAL DRAWINGS FOR CONCRETE FOOTINGS, FOUNDATIONS, SLABS, AND EQUIPMENT PADS (TYP.).
- MECHANICAL, ELECTRICAL, HVAC, PLUMBING, FIRE PROTECTION, AND INSTRUMENTATION ITEMS ARE ILLUSTRATED FOR REFERENCE ONLY; COORDINATE WITH APPROPRIATE DISCIPLINES (TYP.).
- SEE MECHANICAL, ELECTRICAL, HVAC, PLUMBING, FIRE PROTECTION, AND INSTRUMENTATION DRAWINGS FOR ITEMS ATTACHED TO OR PENETRATING THROUGH FLOORS, CEILINGS, ROOF, & WALLS (TYP.).
- VERIFY ALL EXISTING CONDITIONS IN THE FIELD; DISCREPANCIES NOTED BY THE CONTRACTOR MUST BE BROUGHT TO THE ATTENTION OF THE ENGINEER / OWNER PRIOR TO RECEIPT OF BIDS (TYP.).
- ALL DETAILS ARE PROTOTYPICAL; LOCATIONS NOT DETAILED SHALL BE CONSTRUCTED IN A SIMILAR MANNER (TYP.).
- SEE SHEET A-X FOR CODE SUMMARY, SEE SHEET A-1 FOR ABBREVIATIONS (TYP.).
- ALL MASONRY WORK IS THE RESPONSIBILITY OF THE MASONRY FILED SUB-BIDDER UNLESS OTHERWISE NOTED (TYP.).
- ALL WATERPROOFING, DAMP-PROOFING, AND CAULKING WORK IS THE RESPONSIBILITY OF THE WATERPROOFING, DAMP-PROOFING, AND CAULKING FILED SUB-BIDDER UNLESS OTHERWISE NOTED (TYP.).
- ALL PAINTING WORK IS THE RESPONSIBILITY OF THE PAINTING FILED SUB-BIDDER UNLESS OTHERWISE NOTED (TYP.).

ABBREVIATIONS:

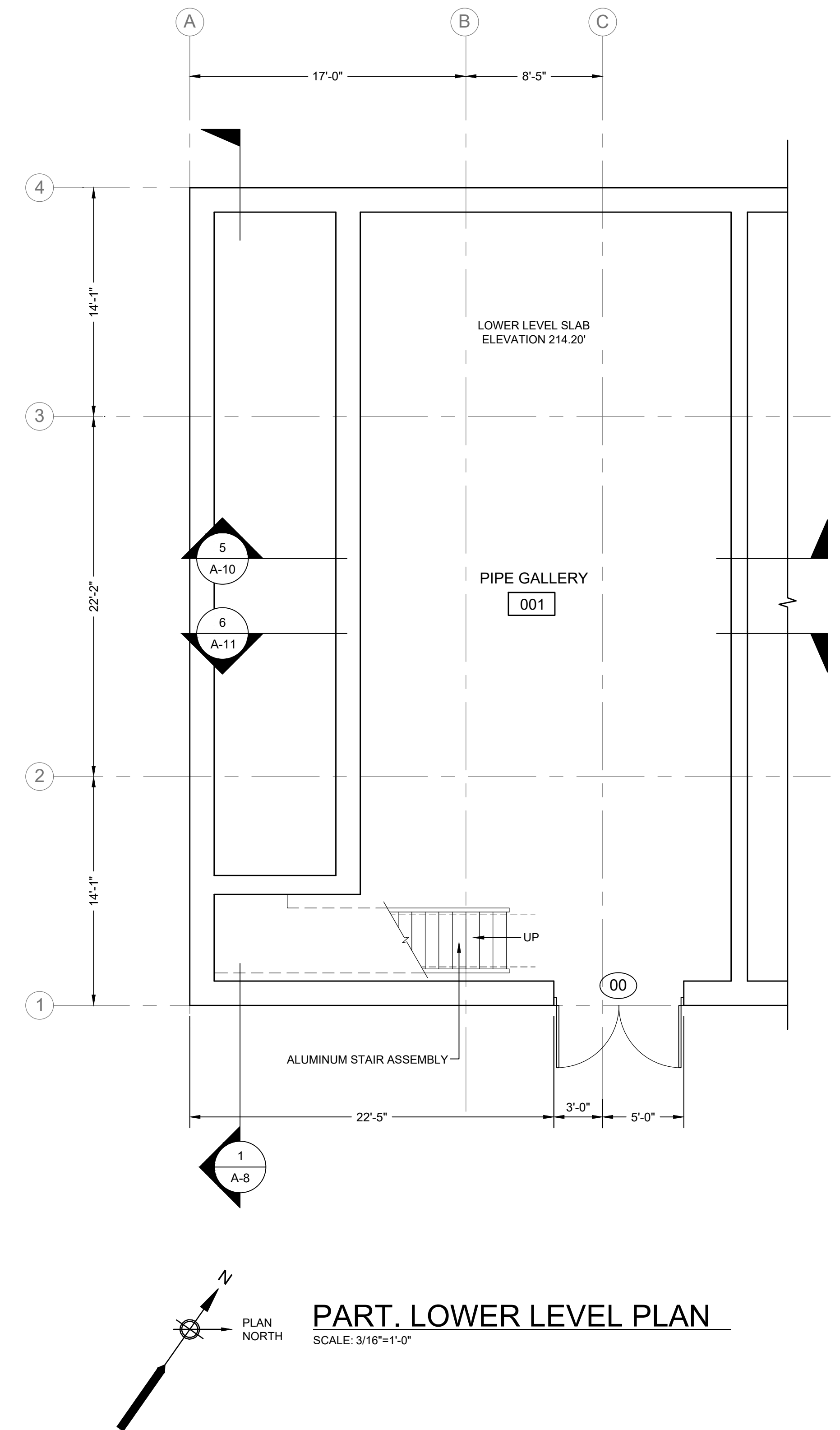
ACT	ACOUSTICAL CEILING TILES	FSB	FILED SUB-BID	PEMB	PRE-ENGINEERED METAL BUILDING
A.F.F.	ABOVE FINISHED FLOOR	FSPA	FIBERGLASS-SANDWICH-PANEL ASSEMBLIES	P.T.	PRESSURE TREATED
ALUM	ALUMINUM	FTG	FOOTING	PV	PHOTO VOLTIC
BOT/BOTT	BOTTOM	GA.	GALUGE	RCP	REFLECTED CEILING PLAN
C.I.	CONTINUOUS INSULATION	GALV.	GALVANIZED	SEC.	SECTION
CMU	CONCRETE MASONRY UNIT	GEN.	GENERAL	SF	SQUARE FEET
CONC	CONCRETE	H	HIGH / HEIGHT	SIM.	SIMILAR
CONT	CONTINUOUS	HM	HOLLOW METAL	STRUCT	STRUCTURAL
COORD.	COORDINATE	HORIZ.	HORIZONTAL	TYP.	TYPICAL
D	DEEP / DEPTH	H.P.	HIGH POINT	U.O.N.	UNLESS OTHERWISE NOTED
DN	DOWN	HVAC	HEATING, VENTILATING, AIR CONDITIONING	V	VENT
DS	DOWNSPOUT	L	LONG / LENGTH	VERT.	VERTICAL
EA	EACH	MAX.	MAXIMUM	V.I.F./VIF	VERIFY IN FIELD
EF	EXHAUST FAN	MECH	MECHANICAL	W	WIDE / WIDTH
ELEC	ELECTRICAL	MFR.	MANUFACTURER	W/	WITH
EL/ELEV	ELEVATION	MIN.	MINIMUM	WD	WOOD
EX/EXIST	EXISTING	M.O.	MASONRY OPENING		
EXT.	EXTERIOR	MTL	METAL		
FF & E	FURNITURE, FIXTURES, & EQUIPMENT	NIC	NOT IN CONTRACT		
FIN	FINISHED	O.C./OC	ON CENTER		
FRP	FIBERGLASS REINFORCED POLYESTER	OPP.	OPPOSITE		

SYMBOL LEGEND



(FE) = FIRE EXTINGUISHER

PROVIDE PORTABLE MULTIPURPOSE DRY-CHEMICAL TYPE FIRE EXTINGUISHERS: UL-RATED 2-A-10-B-C, 5-LB. NOMINAL CAPACITY, WITH MONOAMMONIUM PHOSPHATE-BASED DRY CHEMICAL IN ENAMELED-STEEL CONTAINER. PROVIDE MANUFACTURER'S STANDARD STEEL MOUNTING BRACKETS, DESIGNED TO SECURE FIRE EXTINGUISHERS TO WALL OR STRUCTURE, OF SIZES REQUIRED FOR TYPES AND CAPACITIES OF FIRE EXTINGUISHERS INDICATED, WITH PLATED OR BAKED-ENAMEL FINISH. PROVIDE IDENTIFICATION LETTERING COMPLYING WITH AUTHORITIES HAVING JURISDICTION FOR LETTER STYLE, SIZE, SPACING, AND LOCATION. LOCATE FIRE EXTINGUISHERS AS INDICATED; VERIFY IN FIELD WITH ENGINEER.



PART. LOWER LEVEL PLAN
SCALE: 3/16"=1'-0"



CGKV Architects, Inc.

Scale	AS SHOWN	
Date	SEPTEMBER 2023	
Job No.	245-2103	
Designed by	JK	
Drawn by	EZ	
Checked by		
Approved by		
MARK	DATE	DESCRIPTION

THIS LINE IS ONE INCH LONG WHEN PLOTTED AT FULL SCALE ON A 22" X 34" DRAWING

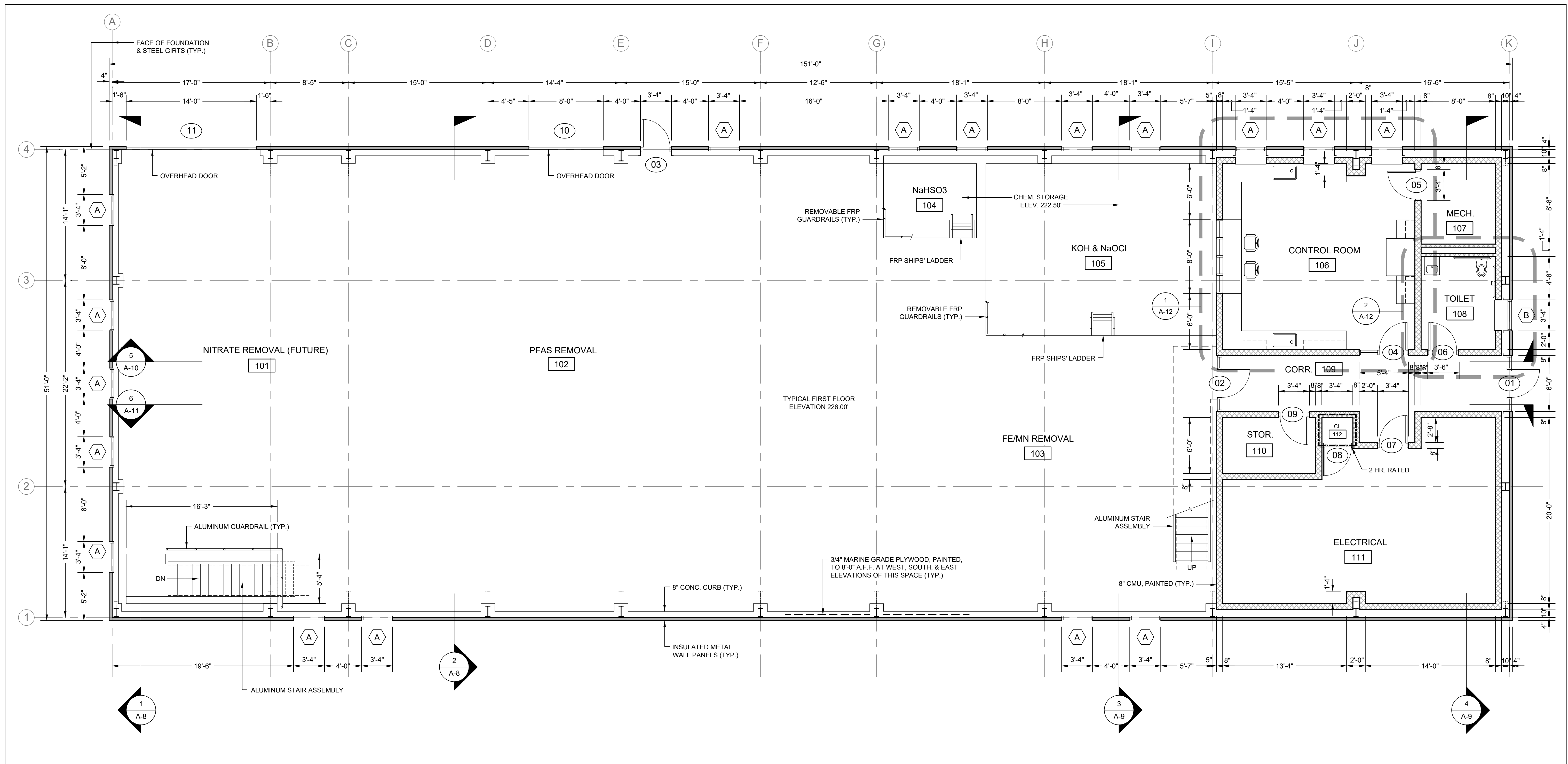
WELLS 2, 3, AND 4 WATER TREATMENT PLANT
TOWN OF SHARON, MA

GENERAL PROJECT INFORMATION; PARTIAL LOWER LEVEL PLAN

50% DESIGN
Sheet No.

A-1

Drawing file: F:\Projects\Sharon Water Treatment\ProjectDrawings\A-plan_elev_sect.dwg Plot Date: Aug 30, 2023 6:12pm



PLAN NORTH

FIRST FLOOR PLAN

 SCALE: 3/16"=1'-0"



ENVIRONMENTAL PARTNERS
 — An Apex Company —
CGKV Architects, Inc.

MARK	DATE	DESCRIPTION

Scale	AS SHOWN
Date	SEPTEMBER 2023
Job No.	245-2103
Designed by	JK
Drawn by	EZ
Checked by	
Approved by	

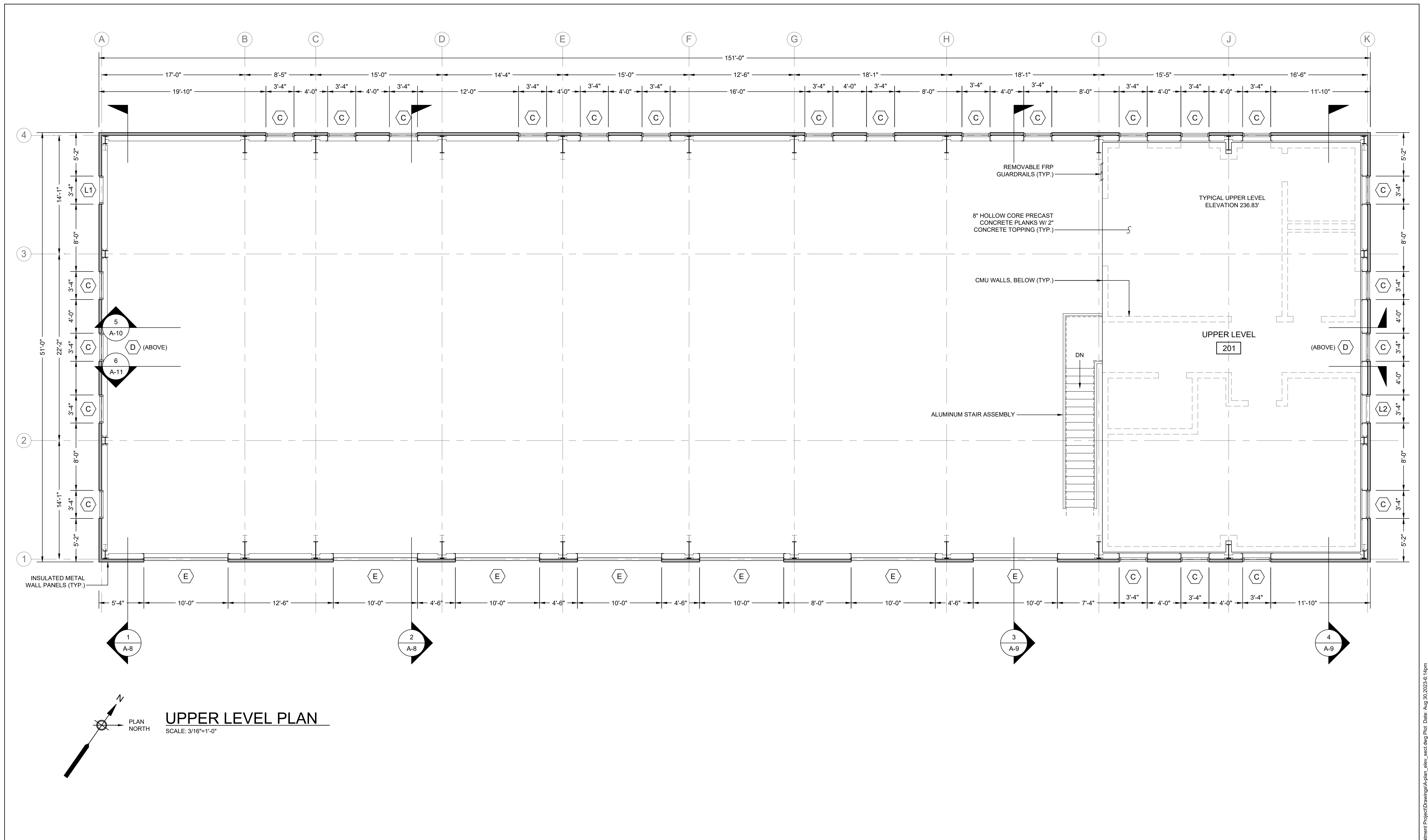
THIS LINE IS ONE INCH LONG WHEN PLOTTED AT FULL SCALE ON A 22" X 34" DRAWING

WELLS 2, 3, AND 4 WATER TREATMENT PLANT
TOWN OF SHARON, MA

FIRST FLOOR PLAN

50% DESIGN
 Sheet No.

A-2



UPPER LEVEL PLAN
SCALE: 3/16"=1'-0"



ENVIRONMENTAL PARTNERS
— An Apex Company —
CGKV Architects, Inc.

MARK	DATE	DESCRIPTION

Scale	AS SHOWN
Date	SEPTEMBER 2023
Job No.	245-2103
Designed by	JK
Drawn by	EZ
Checked by	
Approved by	

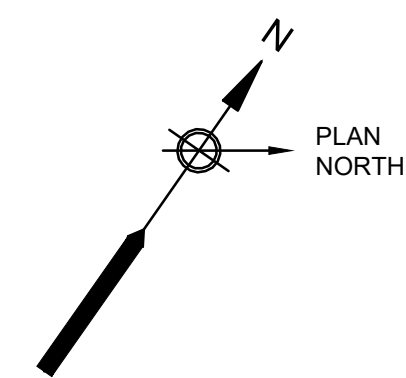
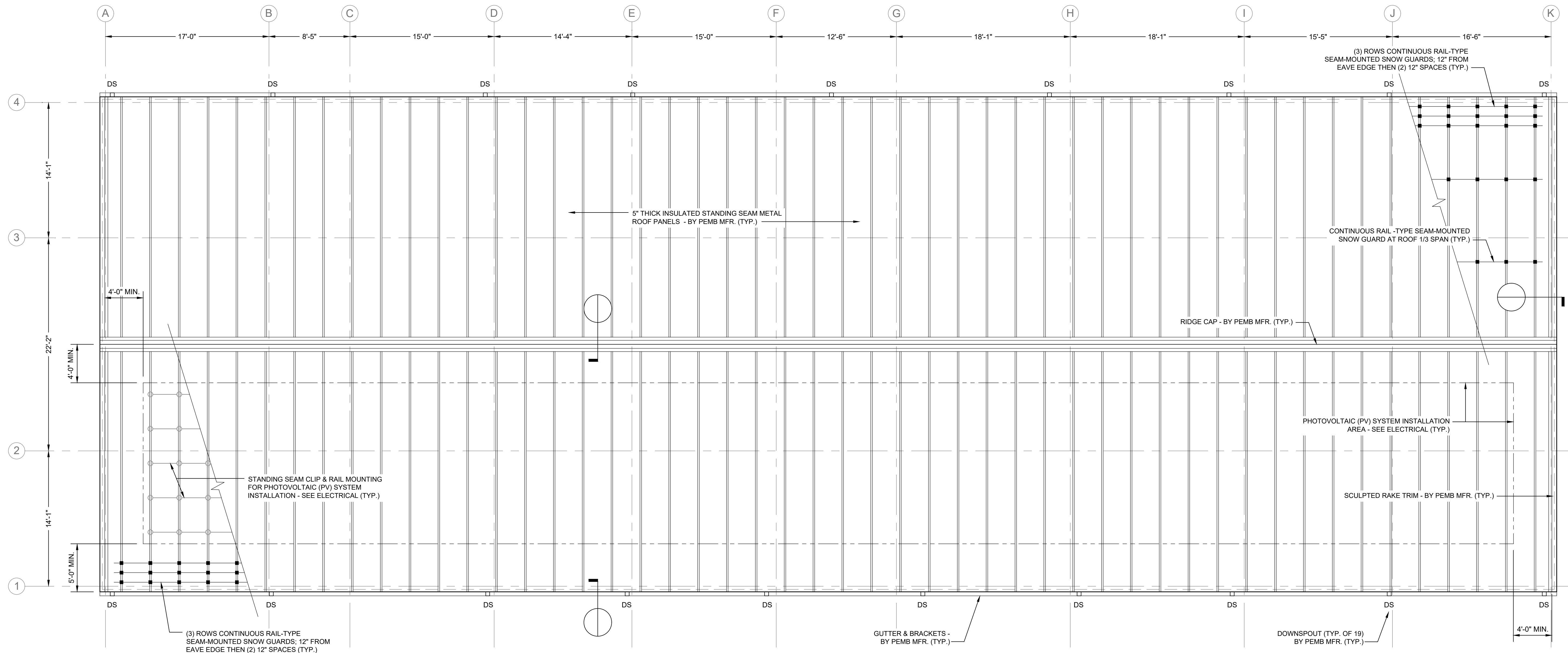
THIS LINE IS ONE INCH LONG WHEN PLOTTED AT FULL SCALE ON A 22" X 34" DRAWING

WELLS 2, 3, AND 4 WATER TREATMENT PLANT
TOWN OF SHARON, MA

UPPER LEVEL PLAN

50% DESIGN
Sheet No.

A-3



ROOF PLAN
SCALE: 3/16"=1'-0"

ROOF PLAN NOTES:

1. ROOF SLOPE = 4:12 UNLESS NOTED OTHERWISE. (TYP.)
2. ALL GUTTERS TO BE SUPPORTED AS PER METAL BUILDING MANUFACTURER. METAL BUILDING MANUFACTURER TO SIZE GUTTERS AND DOWNSPOUTS IN ACCORDANCE WITH BUILDING CODE REQUIREMENTS. (TYP.)
3. ROOF PENETRATIONS TO BE CUT AND FLASHED BY METAL BUILDING MANUFACTURER. PROVIDE ROOF FLASHING AT ALL PENETRATIONS INCLUDING BUT NOT LIMITED TO VENT STACKS, FLUES, AND EXHAUST FANS. REVIEW PLUMBING, HVAC, MECHANICAL, AND ELECTRICAL DRAWINGS FOR CONSTRUCTION NOT INDICATED ON THIS DRAWING. (TYP.)
4. PROVIDE CRICKETS AT ALL ROOFTOP EQUIPMENT AND PENETRATIONS TO CREATE ADEQUATE ROOF DRAINAGE. (TYP.)
5. SUPPLEMENTAL FRAMING AND CURBS FOR ALL ROOFTOP EQUIPMENT SHALL BE FURNISHED AND INSTALLED BY THE METAL BUILDING MANUFACTURER. (TYP.)
6. THE PEMB MFR. IS RESPONSIBLE FOR CONDUCTING ALL ENGINEERING AND PROVIDING A SOLAR READY STRUCTURE CAPABLE OF ACCOMMODATING THE INSTALLATION OF A PHOTOVOLTAIC SYSTEM IN ACCORDANCE WITH THE MA BUILDING CODE. SEE ALSO ELECTRICAL. (TYP.)
7. THE PEMB MFR. IS RESPONSIBLE FOR PROVIDING STRUCTURAL SUPPORT & WEATHERTIGHT PENETRATIONS FOR ALL ITEMS MOUNTED TO OR PENETRATING THROUGH THE ROOF, WHETHER OR NOT ILLUSTRATED; REFER TO STRUCTURAL, MECHANICAL, HVAC, PLUMBING, FIRE PROTECTION, & ELECTRICAL DRAWINGS. (TYP.)



ENVIRONMENTAL PARTNERS
— An Apex Company —

CGKV Architects, Inc.

Scale	AS SHOWN	
Date	SEPTEMBER 2023	
Job No.	245-2103	
Designed by	JK	
Drawn by	EZ	
Checked by		
Approved by		
MARK	DATE	DESCRIPTION

THIS LINE IS ONE INCH LONG WHEN PLOTTED AT FULL SCALE ON A 22" X 34" DRAWING

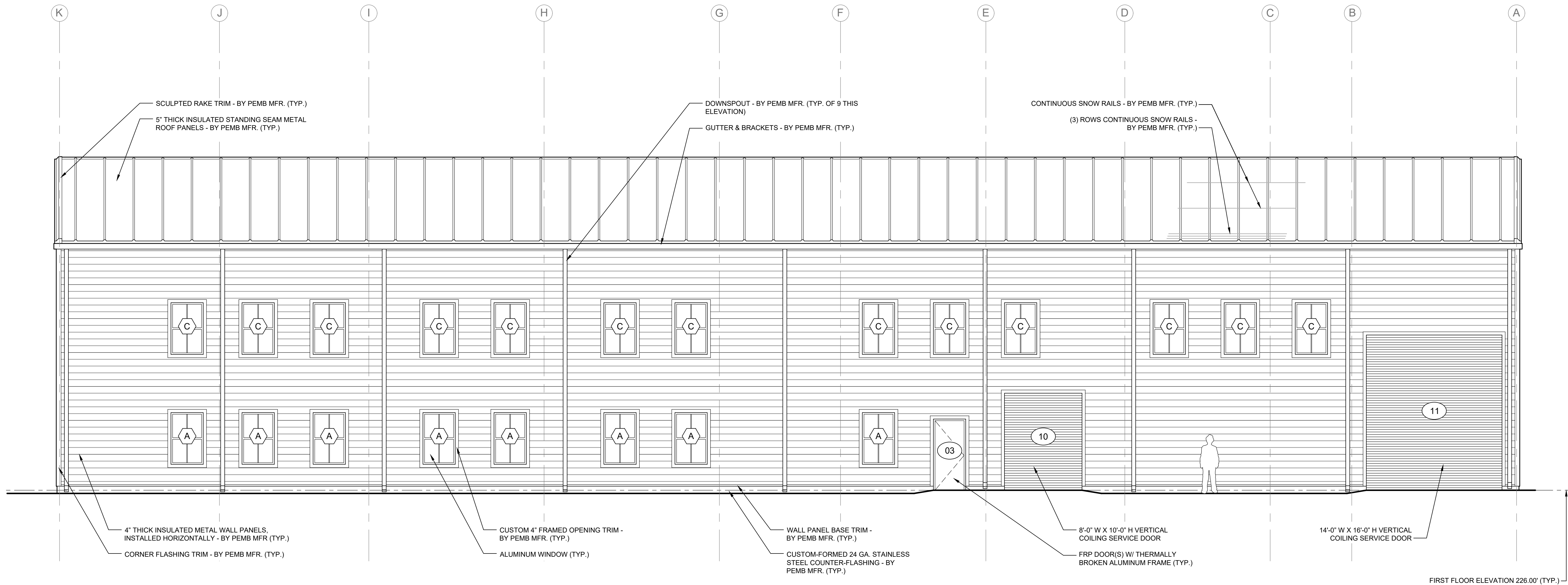
**WELLS 2, 3, AND 4 WATER TREATMENT PLANT
TOWN OF SHARON, MA**

ROOF PLAN

50% DESIGN

Sheet No.

A-4



WEST (TREE LANE) ELEVATION

SCALE: 3/16"=1'-0"



ENVIRONMENTAL PARTNERS
— An Apex Company —
CGKV Architects, Inc.

MARK	DATE	DESCRIPTION

Scale	AS SHOWN
Date	SEPTEMBER 2023
Job No.	245-2103
Designed by	JK
Drawn by	EZ
Checked by	
Approved by	

THIS LINE IS ONE INCH LONG WHEN PLOTTED AT FULL SCALE ON A 22" X 34" DRAWING

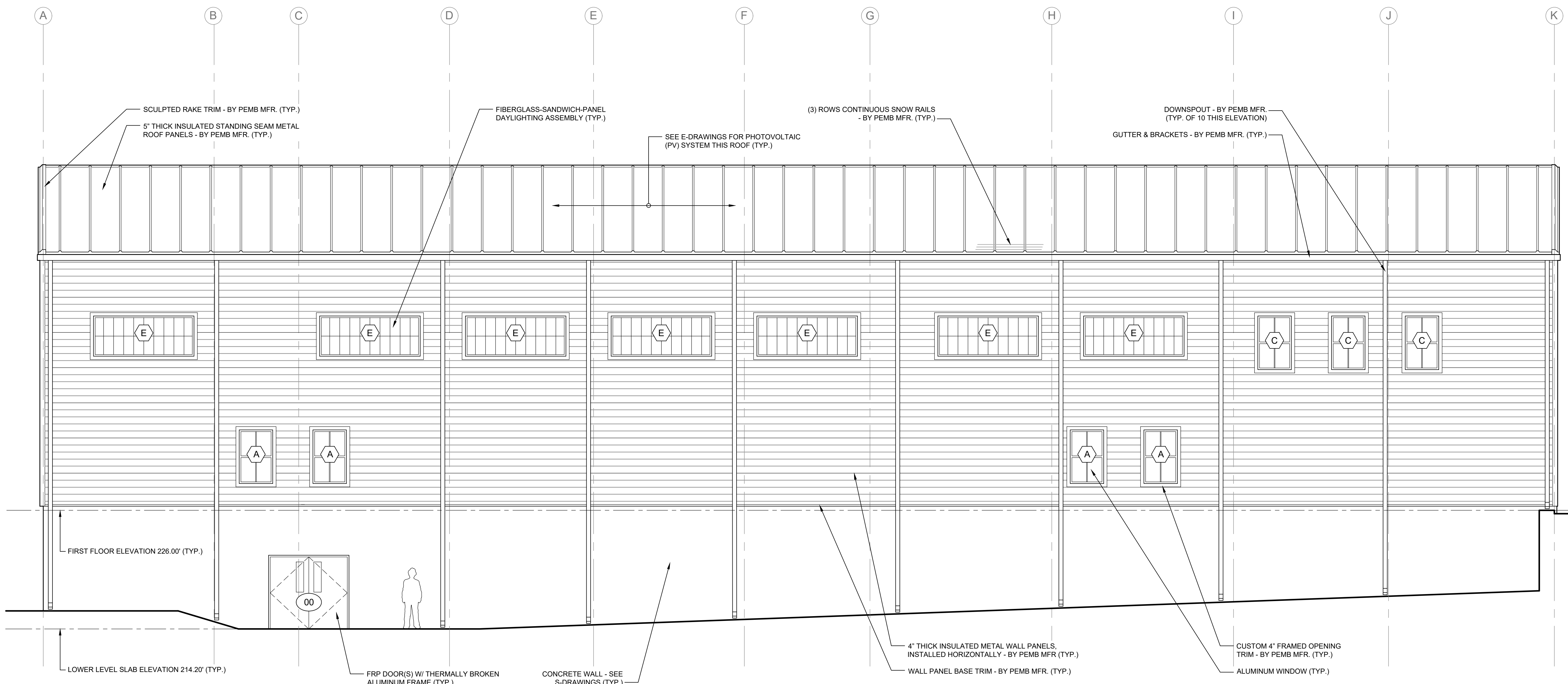
**WELLS 2, 3, AND 4 WATER TREATMENT PLANT
TOWN OF SHARON, MA**

EXTERIOR ELEVATIONS I (WEST)

50% DESIGN

Sheet No.

A-5



EAST ELEVATION
SCALE: 3/16"=1'-0"



ENVIRONMENTAL PARTNERS
— An Apex Company —
CGKV Architects, Inc.

MARK	DATE	DESCRIPTION

Scale	AS SHOWN
Date	SEPTEMBER 2023
Job No.	245-2103
Designed by	JK
Drawn by	EZ
Checked by	
Approved by	

THIS LINE IS ONE INCH LONG WHEN PLOTTED AT FULL SCALE ON A 22" X 34" DRAWING

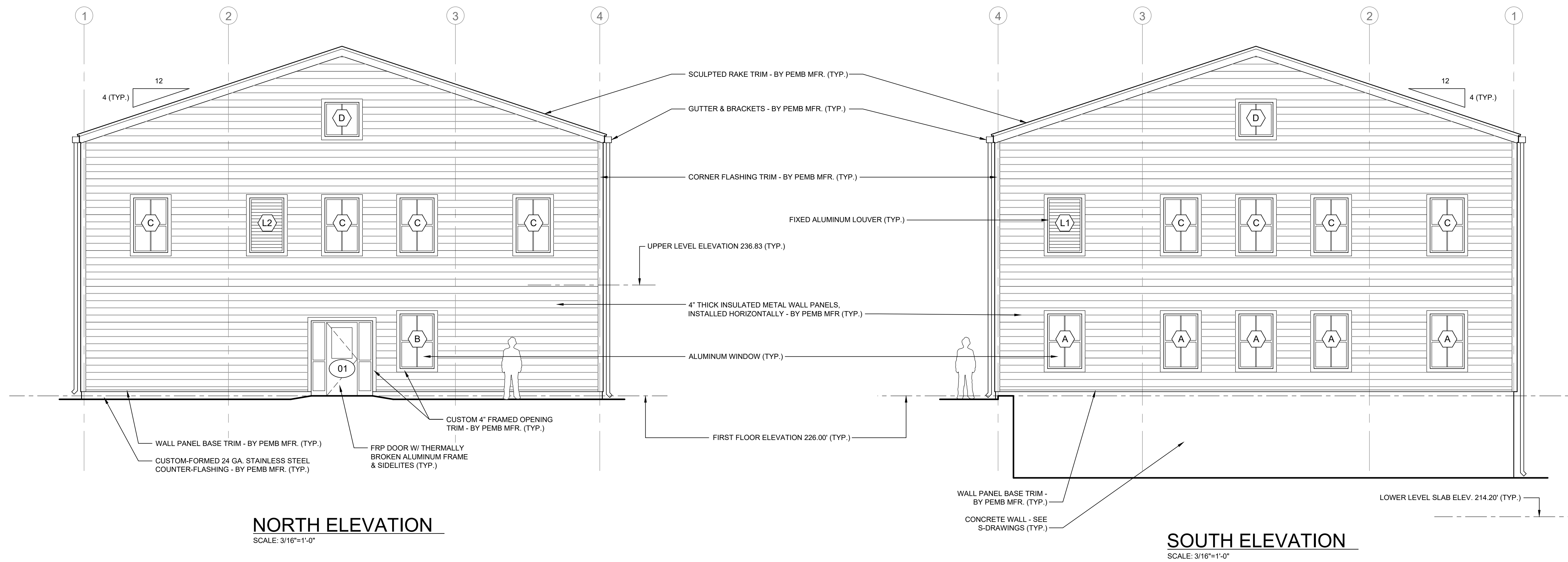
**WELLS 2, 3, AND 4 WATER TREATMENT PLANT
TOWN OF SHARON, MA**

EXTERIOR ELEVATIONS II (EAST)

50% DESIGN
Sheet No.

A-6

Drawing file: F:\Projects\Sharon Water Treatment\ProjectDrawings\A-plan_elev_sect.dwg Plot Date: Aug 30 2023 6:15pm



NORTH ELEVATION
SCALE: 3/16"=1'-0"

SOUTH ELEVATION
SCALE: 3/16"=1'-0"



ENVIRONMENTAL PARTNERS
— An Apex Company —
CGKV Architects, Inc.

MARK	DATE	DESCRIPTION

Scale	AS SHOWN
Date	SEPTEMBER 2023
Job No.	245-2103
Designed by	JK
Drawn by	EZ
Checked by	
Approved by	

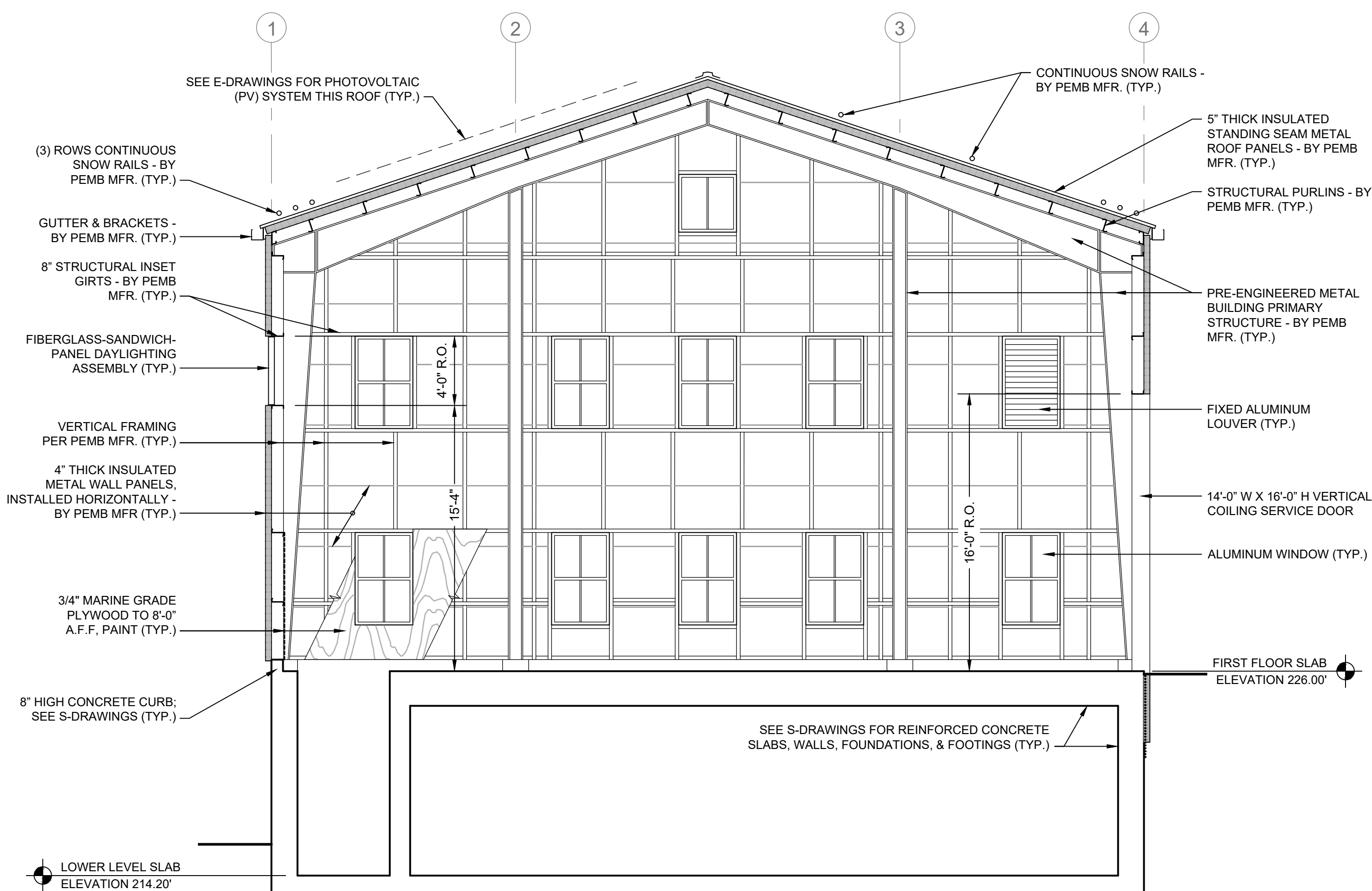
THIS LINE IS ONE INCH LONG WHEN PLOTTED AT FULL SCALE ON A 22" X 34" DRAWING

WELLS 2, 3, AND 4 WATER TREATMENT PLANT
TOWN OF SHARON, MA

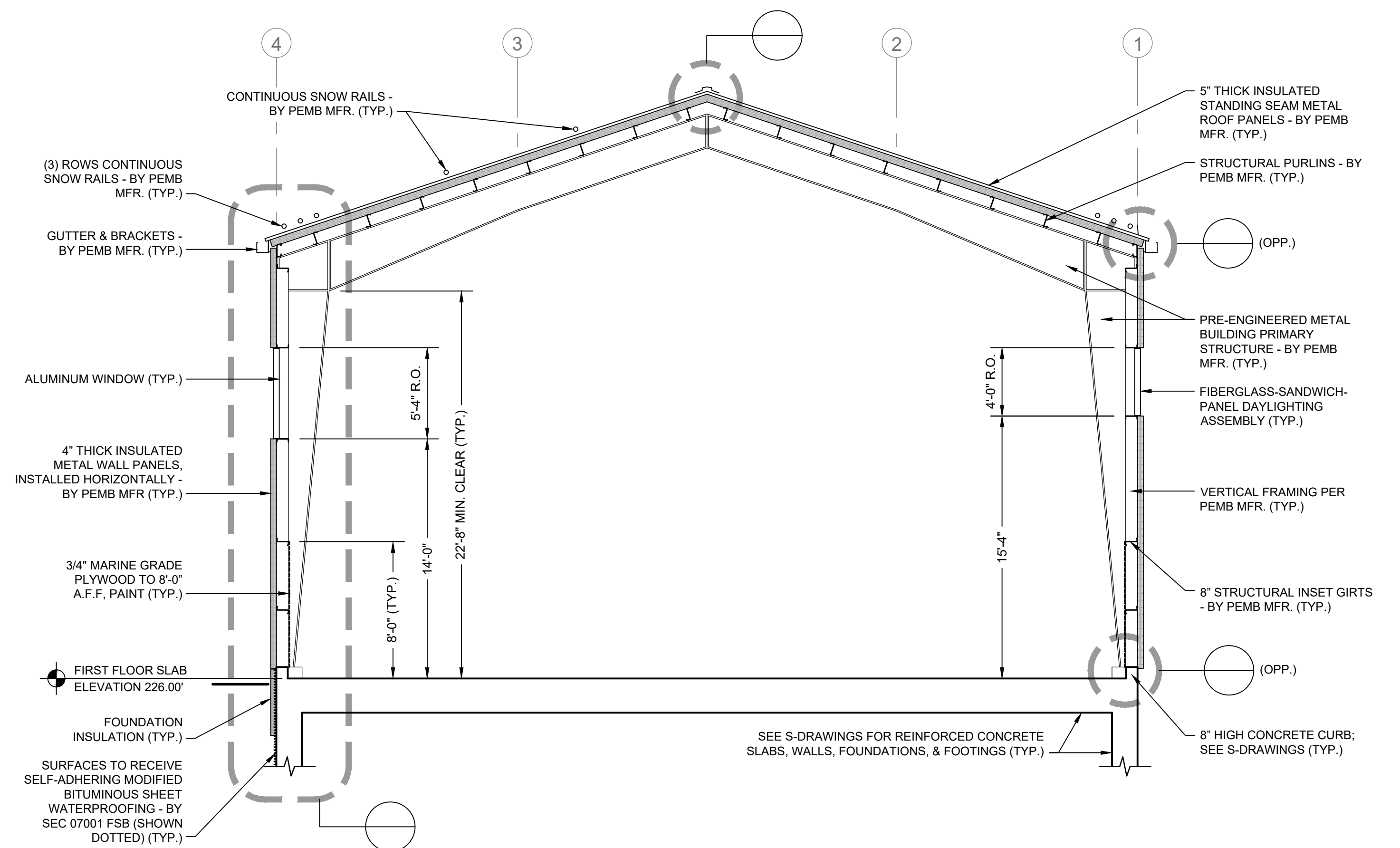
EXTERIOR ELEVATIONS III (NORTH & SOUTH)

50% DESIGN
Sheet No.

A-7



BUILDING SECTION 1
SCALE: 3/16"=1'-0"
A-2



BUILDING SECTION 2
SCALE: 3/16"=1'-0"
A-2



ENVIRONMENTAL PARTNERS
— An Apex Company —
CGKV Architects, Inc.

MARK	DATE	DESCRIPTION

Scale	AS SHOWN
Date	SEPTEMBER 2023
Job No.	245-2103
Designed by	JK
Drawn by	EZ
Checked by	
Approved by	

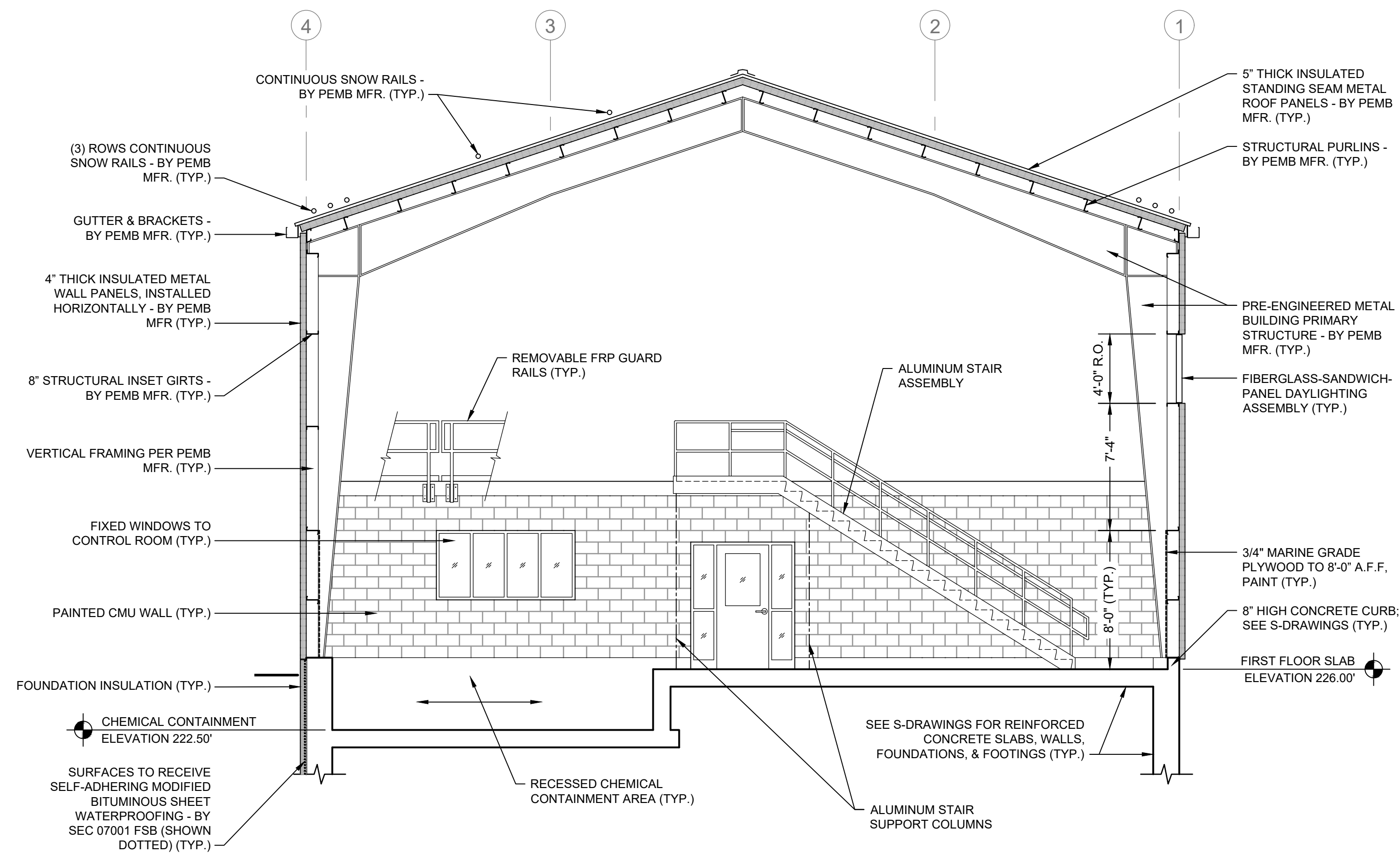
THIS LINE IS ONE INCH LONG WHEN PLOTTED AT FULL SCALE ON A 22" X 34" DRAWING

WELLS 2, 3, AND 4 WATER TREATMENT PLANT
TOWN OF SHARON, MA

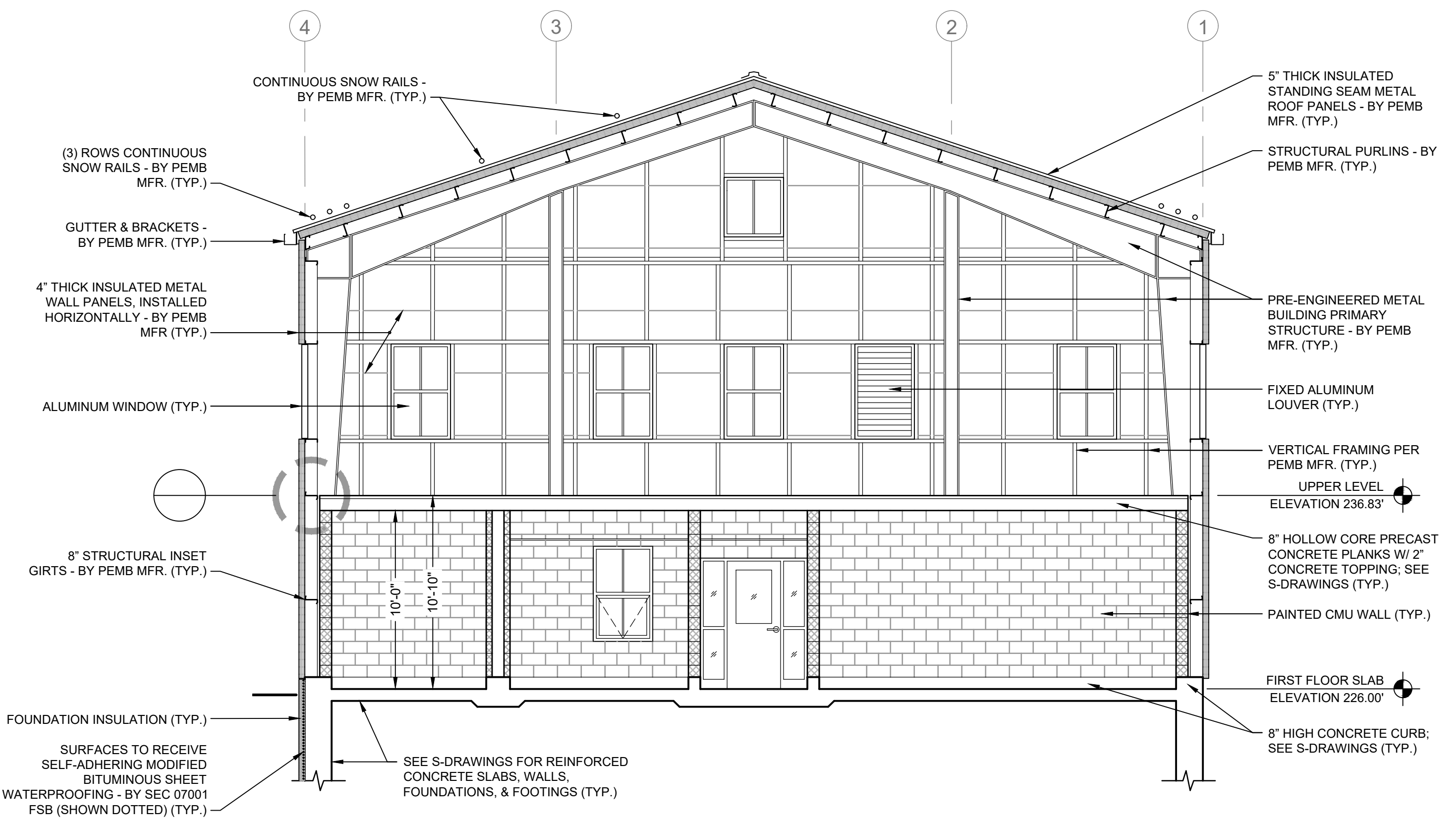
BUILDING SECTIONS I

50% DESIGN
Sheet No.

A-8



BUILDING SECTION 3
SCALE: 3/16"=1'-0"



BUILDING SECTION 4
SCALE: 3/16"=1'-0"



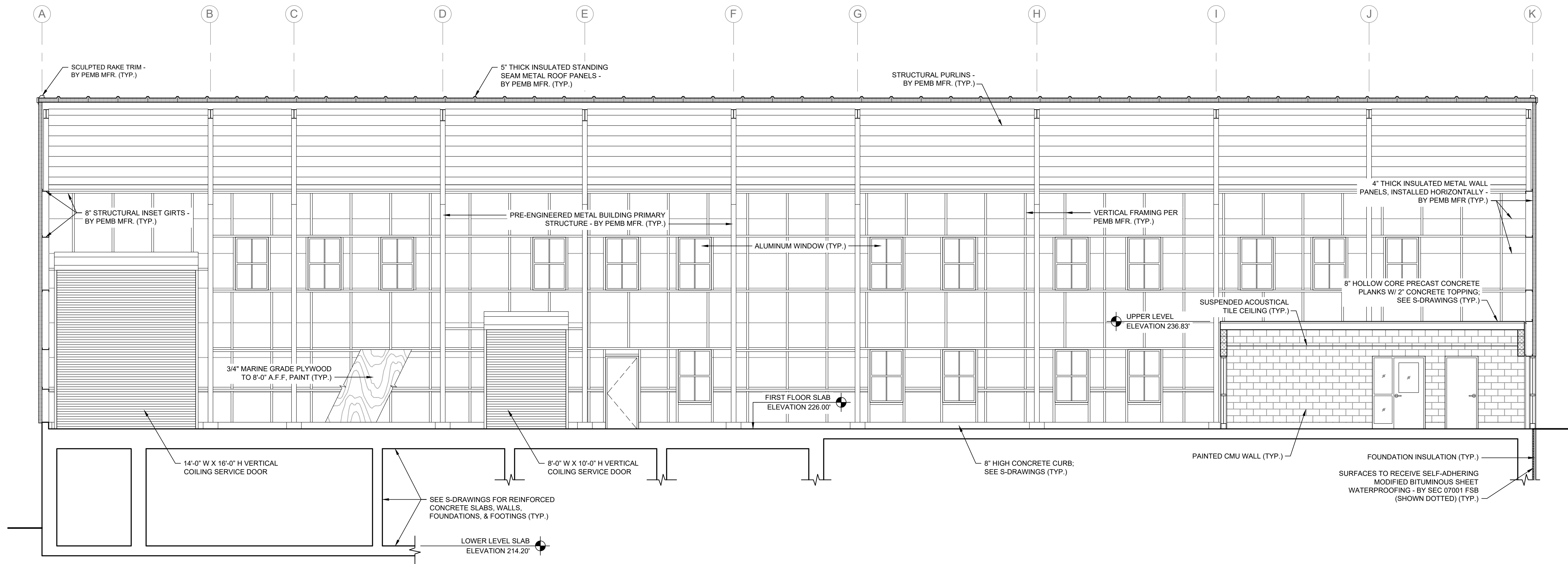
ENVIRONMENTAL PARTNERS
— An Apex Company —
CGKV Architects, Inc.

Scale	AS SHOWN	
Date	SEPTEMBER 2023	
Job No.	245-2103	
Designed by	JK	
Drawn by	EZ	
Checked by		
Approved by		
MARK	DATE	DESCRIPTION

THIS LINE IS ONE INCH LONG WHEN PLOTTED AT FULL SCALE ON A 22" X 34" DRAWING

WELLS 2, 3, AND 4 WATER TREATMENT PLANT
TOWN OF SHARON, MA
BUILDING SECTIONS II

50% DESIGN
Sheet No.
A-9



BUILDING SECTION
 SCALE: 3/16"=1'-0"
 5
 A-2



ENVIRONMENTAL PARTNERS
 — An Apex Company —
CGKV Architects, Inc.

MARK	DATE	DESCRIPTION

Scale	AS SHOWN
Date	SEPTEMBER 2023
Job No.	245-2103
Designed by	JK
Drawn by	EZ
Checked by	
Approved by	

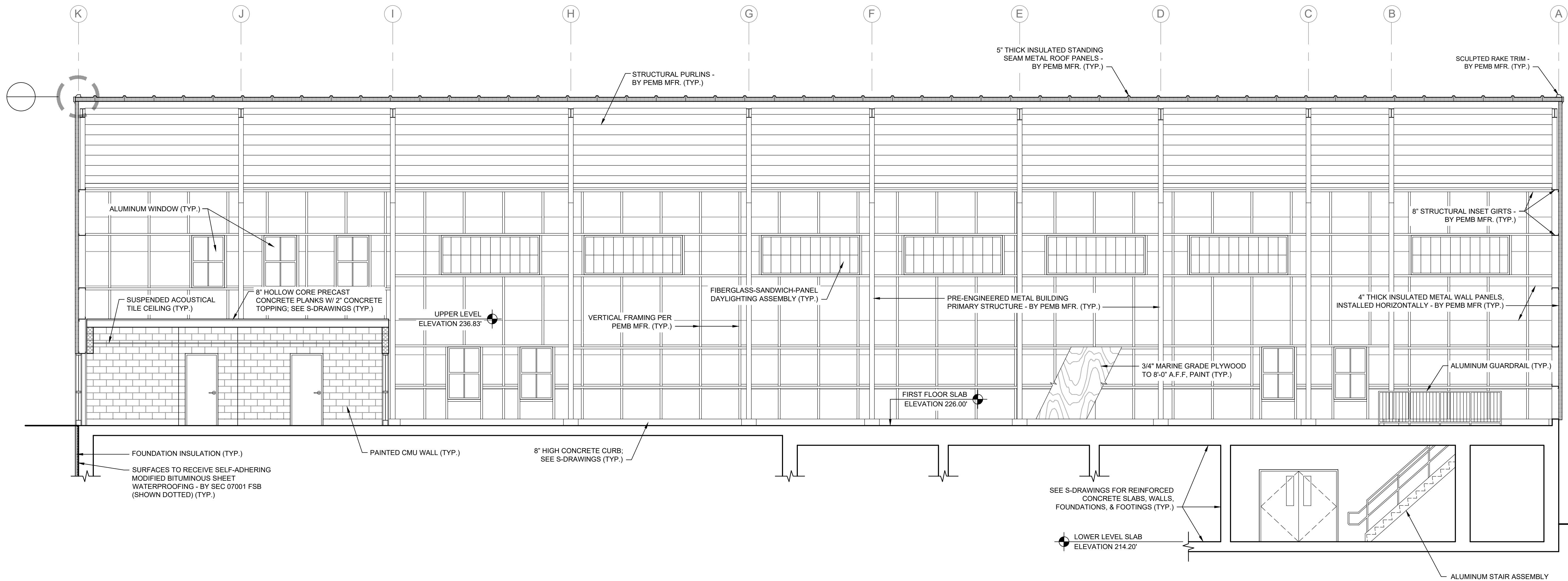
THIS LINE IS ONE INCH LONG WHEN PLOTTED AT FULL SCALE ON A 22" X 34" DRAWING

WELLS 2, 3, AND 4 WATER TREATMENT PLANT
 TOWN OF SHARON, MA

BUILDING SECTIONS III

50% DESIGN
 Sheet No.

A-10



BUILDING SECTION
SCALE: 3/16"=1'-0"

6
A-2



ENVIRONMENTAL PARTNERS
— An Apex Company —
CGKV Architects, Inc.

MARK	DATE	DESCRIPTION

Scale	AS SHOWN
Date	SEPTEMBER 2023
Job No.	245-2103
Designed by	JK
Drawn by	EZ
Checked by	
Approved by	

THIS LINE IS ONE INCH LONG WHEN PLOTTED AT FULL SCALE ON A 22" X 34" DRAWING

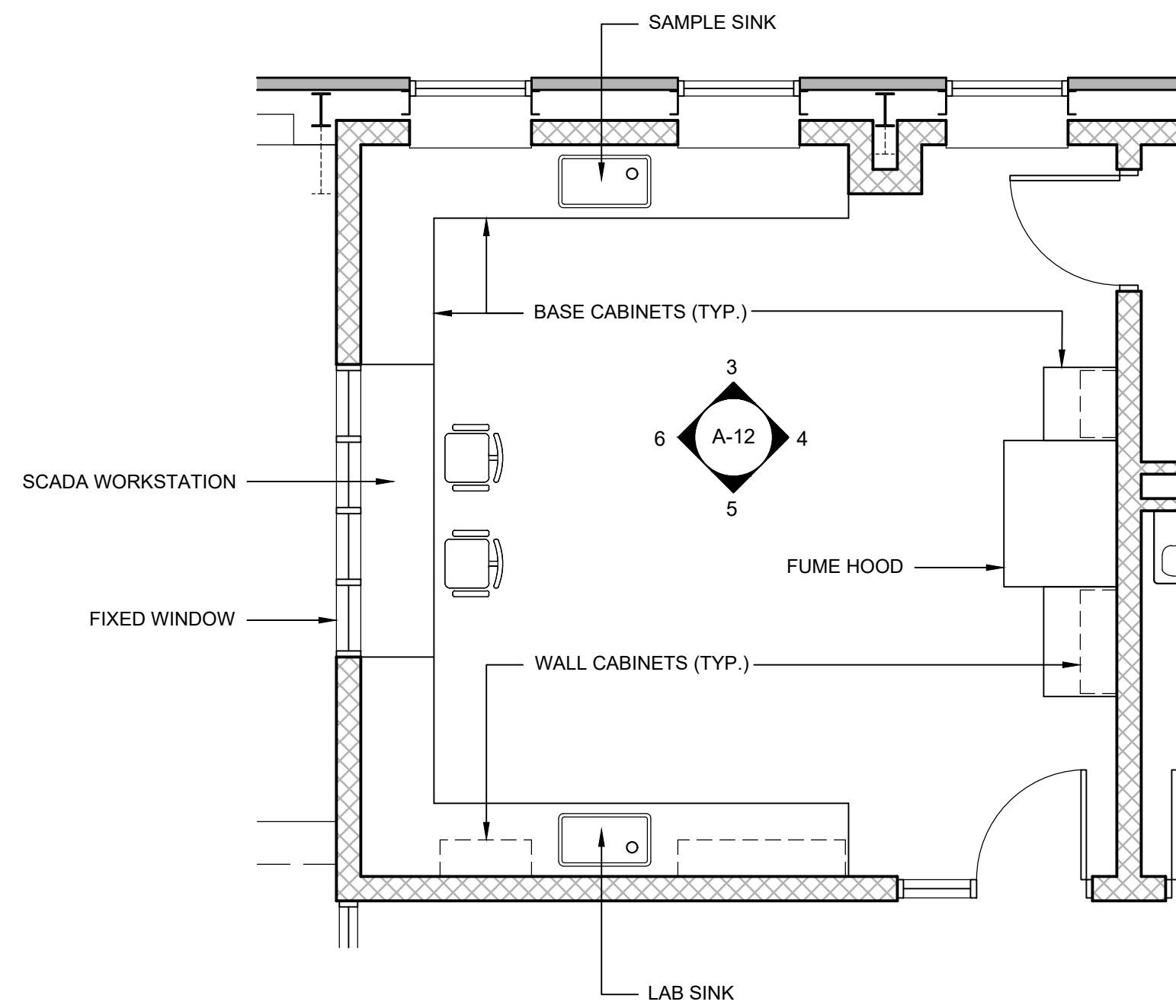
WELLS 2, 3, AND 4 WATER TREATMENT PLANT
TOWN OF SHARON, MA

BUILDING SECTIONS IV

50% DESIGN

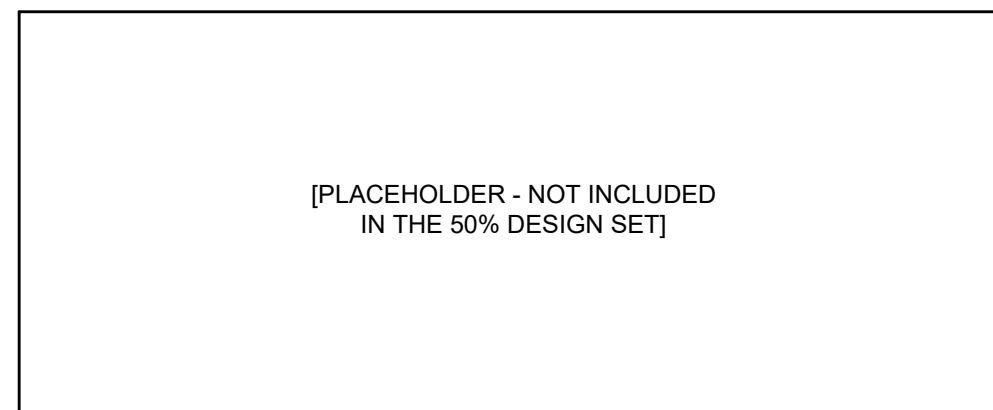
Sheet No.

A-11

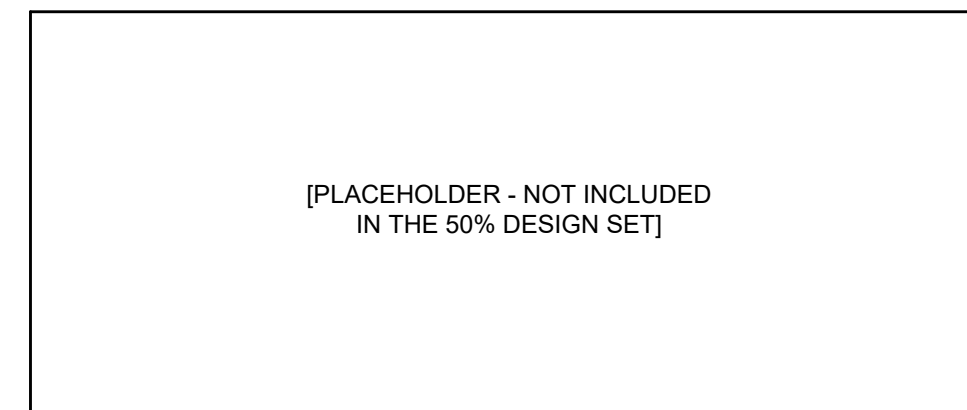


ENLARGED CONTROL ROOM PLAN
SCALE: 1/4"=1'-0"

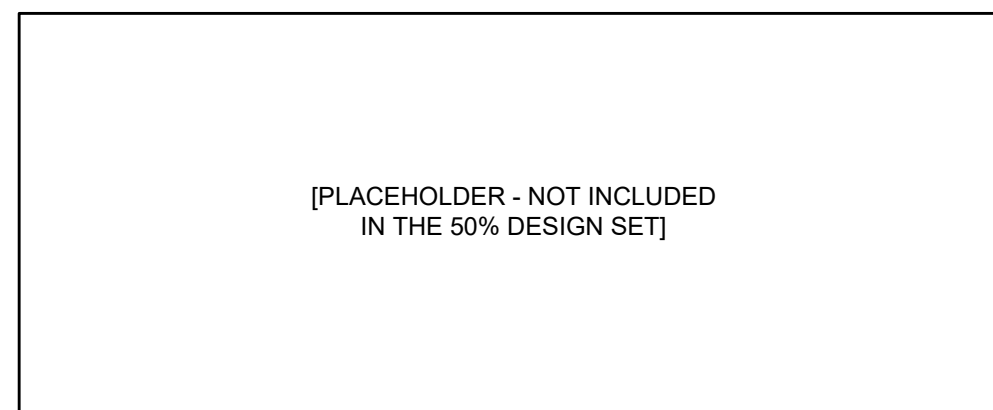
1
A-2



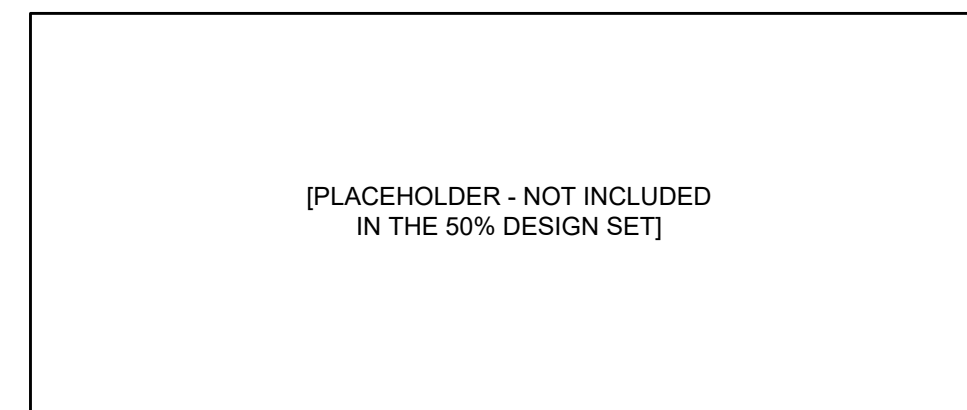
INTERIOR ELEV. 3
SCALE: 1/4"=1'-0"
A-12



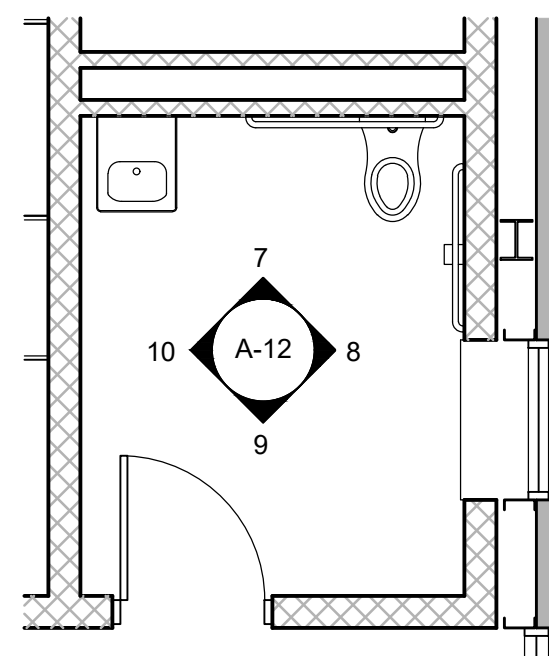
INTERIOR ELEV. 4
SCALE: 1/4"=1'-0"
A-12



INTERIOR ELEV. 5
SCALE: 1/4"=1'-0"
A-12

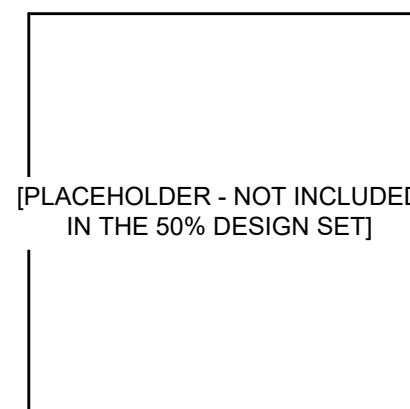


INTERIOR ELEV. 6
SCALE: 1/4"=1'-0"
A-12

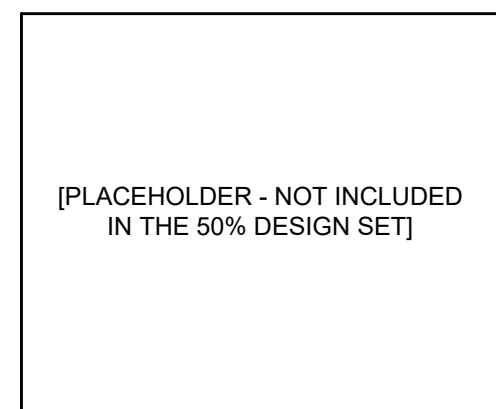


ENLARGED TOILET PLAN
SCALE: 1/4"=1'-0"

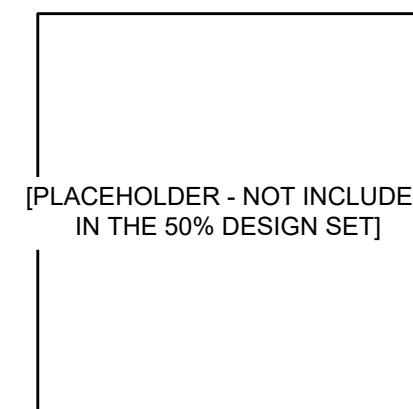
2
A-2



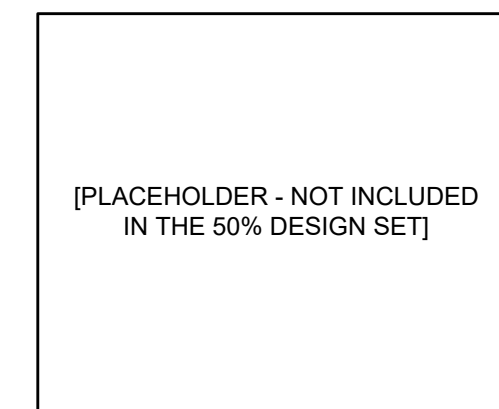
INTERIOR ELEV. 7
SCALE: 1/4"=1'-0"
A-12



INTERIOR ELEV. 8
SCALE: 1/4"=1'-0"
A-12



INTERIOR ELEV. 9
SCALE: 1/4"=1'-0"
A-12



INTERIOR ELEV. 10
SCALE: 1/4"=1'-0"
A-12



ENVIRONMENTAL PARTNERS
— An Apex Company —

CGKV Architects, Inc.

MARK	DATE	DESCRIPTION

Scale	AS SHOWN
Date	SEPTEMBER 2023
Job No.	245-2103
Designed by	JK
Drawn by	EZ
Checked by	
Approved by	

THIS LINE IS ONE INCH LONG WHEN PLOTTED AT FULL SCALE ON A 22" X 34" DRAWING

**WELLS 2, 3, AND 4 WATER TREATMENT PLANT
TOWN OF SHARON, MA**

ENLARGED FLOOR PLANS; INTERIOR ELEVATIONS

50% DESIGN
Sheet No.

A-12

ROOM FINISH SCHEDULE

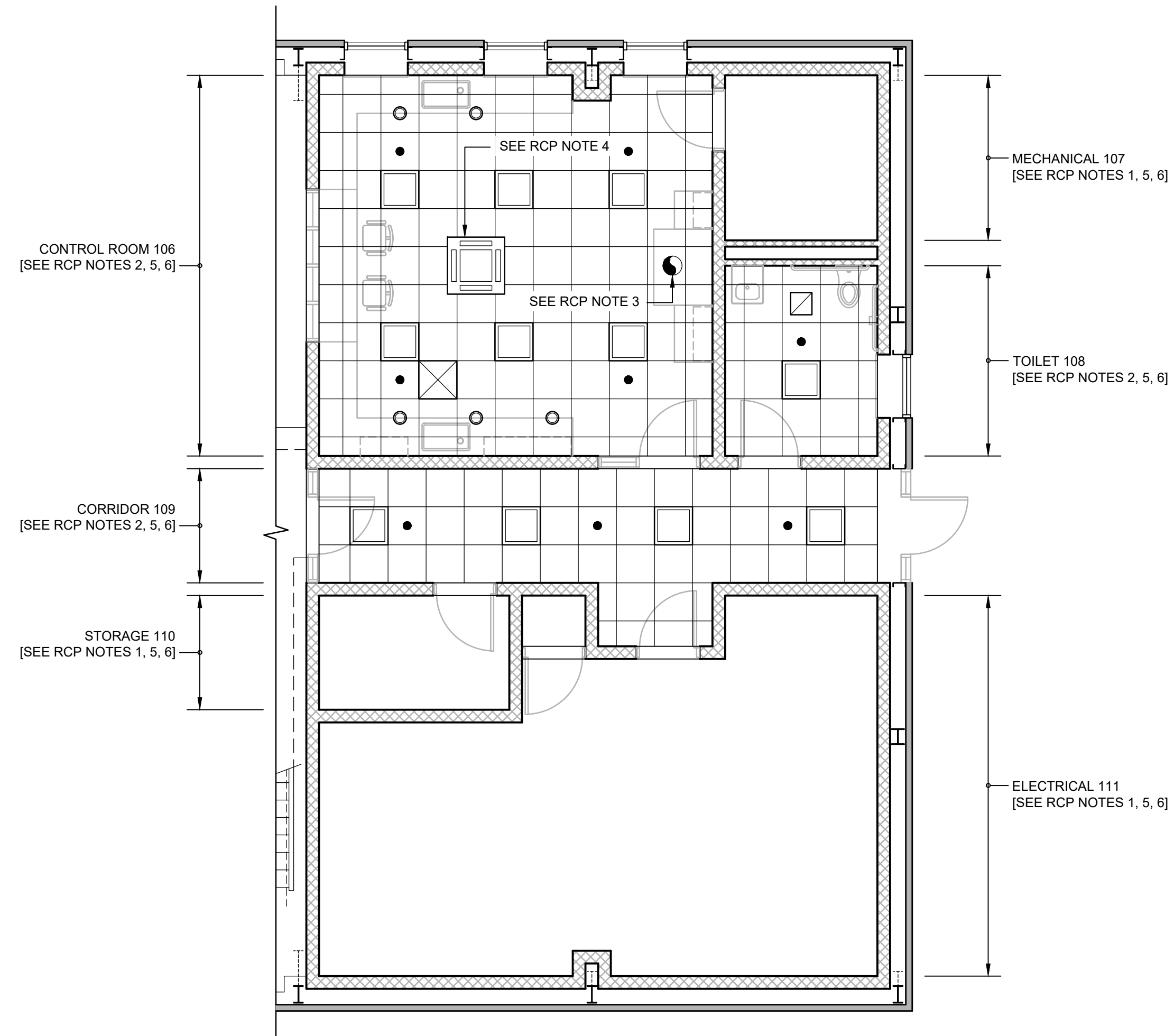
ROOM NO.	ROOM NAME	BASE	FLOOR	NORTH WALL	WEST WALL	EAST WALL	SOUTH WALL	CEILING	HEIGHT	REMARKS
001	PIPE GALLERY	CONC.	CONC. (SLR)	CONC.	CONC.	CONC.	CONC.	CONC.	11'-9 1/2"	
101	NITRATE REMOVAL (FUTURE)	CONC. (SLR)	CONC. (SLR)	--	MTL. WALL PANEL M.G. PLY. (PTD)	MTL. WALL PANEL M.G. PLY. (PTD)	MTL. WALL PANEL M.G. PLY. (PTD)	MTL. ROOF PANELS	VARIES	
102	PFAS REMOVAL	CONC. (SLR)	CONC. (SLR)	--	MTL. WALL PANEL M.G. PLY. (PTD)	MTL. WALL PANEL M.G. PLY. (PTD)	--	MTL. ROOF PANELS	VARIES	
103	FE / MN REMOVAL	CONC. (SLR)	CONC. (CRFF)	CMU (PTD)	--	MTL. WALL PANEL M.G. PLY. (PTD)	--	MTL. ROOF PANELS	VARIES	
104	NaHSO3 STORAGE	CONC. (CRWF)	CONC. (CRFF)	CONC. (CRWF)	CONC. (CRWF) M.G. PLY. (PTD) MTL. WALL PANELS	CONC. (CRWF)	CONC. (CRWF)	MTL. ROOF PANELS	VARIES	
105	KOH & NaOCI STORAGE	CONC. (CRWF)	CONC. (CRFF)	CONC. (CRWF) CMU (PTD)	CONC. (CRWF) M.G. PLY. (PTD) MTL. WALL PANELS	CONC. (CRWF)	CONC. (CRWF)	MTL. ROOF PANELS	VARIES	
106	CONTROL ROOM	CONC. (PTD) RES. BASE	CONC. (SLR)	CMU (PTD)	CMU (PTD)	CMU (PTD)	CMU (PTD)	ACT	8'-4"	
107	MECHANICAL	CONC. (SLR)	CONC. (SLR)	CMU	CMU	CMU	CMU	CONC.	10'-0"	
108	TOILET	CONC. (PTD) RES. BASE	CONC. (SLR)	CMU (PTD)	CMU (PTD)	CMU (PTD)	CMU (PTD)	ACT	8'-4"	
109	CORRIDOR	CONC. (PTD) RES. BASE	CONC. (SLR)	CMU (PTD)	CMU (PTD)	CMU (PTD)	CMU (PTD)	ACT	8'-4"	
110	STORAGE	CONC. (SLR)	CONC. (SLR)	CMU	CMU	CMU	CMU	CONC.	10'-0"	
111	ELECTRICAL	CONC. (SLR)	CONC. (SLR)	CMU	CMU	CMU	CMU	CONC.	10'-0"	
112	CLOSET	CONC. (SLR)	CONC. (SLR)	CMU	CMU	CMU	CMU	CONC.	10'-0"	2 HR. RATED
201	UPPER LEVEL	--	CONC.	MTL. WALL PANELS	MTL. WALL PANELS	MTL. WALL PANELS	--	MTL. ROOF PANELS	VARIES	

FINISH SCHEDULE NOTES:

1. CONCRETE FLOOR HARDENER / SEALER (SLR) IS BY SECTION 03300 (TYP.).
2. ALL PAINTING (PTD) AND CHEMICAL RESISTANT FLOOR & WALL FINISHES (CRFF, CRWF) IS THE RESPONSIBILITY OF THE PAINTING FSB UNLESS OTHERWISE NOTED (TYP.).
3. MARINE GRADE PLYWOOD (M.G. PLY.) EXTENDS TO 8'-0" A.F.F. (TYP.).

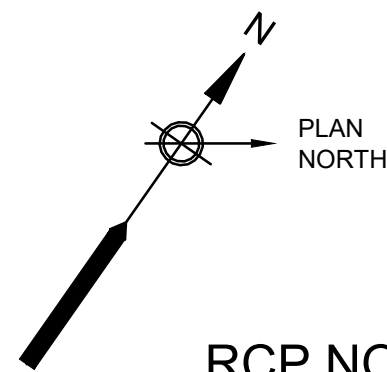
ABBREVIATIONS:

- ACT: ACOUSTICAL CEILING TILES
A.F.F.: ABOVE FINISHED FLOOR
CMU: CONCRETE MASONRY UNITS
CONC: CONCRETE
CRFF: CHEMICAL RESISTANT FLOOR FINISH
CRWF: CHEMICAL RESISTANT WALL FINISH
ES: EXPOSED STRUCTURE
M.G. PLY.: MARINE GRADE PLYWOOD
MTL: METAL
PTD: PAINTED
RES.: RESILIENT (BASE)
SLR: SEALER [SEE NOTE 1]



PARTIAL FIRST FLOOR REFLECTED CEILING PLAN (RCP)

SCALE: 3/16"=1'-0"



RCP NOTES:

1. PRE-CAST CONCRETE PLANK CEILING STRUCTURE; FINISHED CEILING HEIGHT 10'-0" A.F.F. (TYP.).
2. 2 x 2 SUSPENDED ACOUSTICAL PANEL CEILING SYSTEM; FINISHED CEILING HEIGHT 8'-4" A.F.F.; (UNDERSIDE OF PRE-CAST CONCRETE CEILING STRUCTURE ABOVE, 10'-0" A.F.F.) (TYP.).
3. FUME HOOD EXHAUST DUCT; COORDINATE WITH HVAC FSB (TYP.).
4. CEILING MOUNTED CASSETTE MINI SPLIT HEAT PUMP; COORDINATE WITH HVAC FSB (TYP.).
5. SEE ALSO HVAC, PLUMBING, FIRE PROTECTION, ELECTRICAL, AND OTHER DRAWINGS FOR OTHER ITEMS MOUNTED TO OR PENETRATING THROUGH CEILINGS (TYP.).
6. VERIFY AND COORDINATE FINAL LOCATIONS IN THE FIELD WITH ENGINEER (TYP.).

RCP LEGEND

- | | | | |
|--|----------------------------------|--|--------------------------|
| | RECESSED LIGHTING FIXTURE | | SMOKE DETECTOR |
| | RECESSED DOWNLIGHT | | HEAT DETECTOR |
| | SURFACE MOUNTED LIGHTING FIXTURE | | CARBON MONOXIDE DETECTOR |
| | SUPPLY DIFFUSER | | ANTENNA (INTERIOR) |
| | EXHAUST GRILLE | | CONCEALED SPRINKLER HEAD |
| | EXHAUST FAN | | |



ENVIRONMENTAL PARTNERS
An Apex Company

CGKV Architects, Inc.

Scale	AS SHOWN	
Date	SEPTEMBER 2023	
Job No.	245-2103	
Designed by	JK	
Drawn by	EZ	
Checked by		
Approved by		
MARK	DATE	DESCRIPTION

THIS LINE IS ONE INCH LONG WHEN PLOTTED AT FULL SCALE ON A 22" X 34" DRAWING

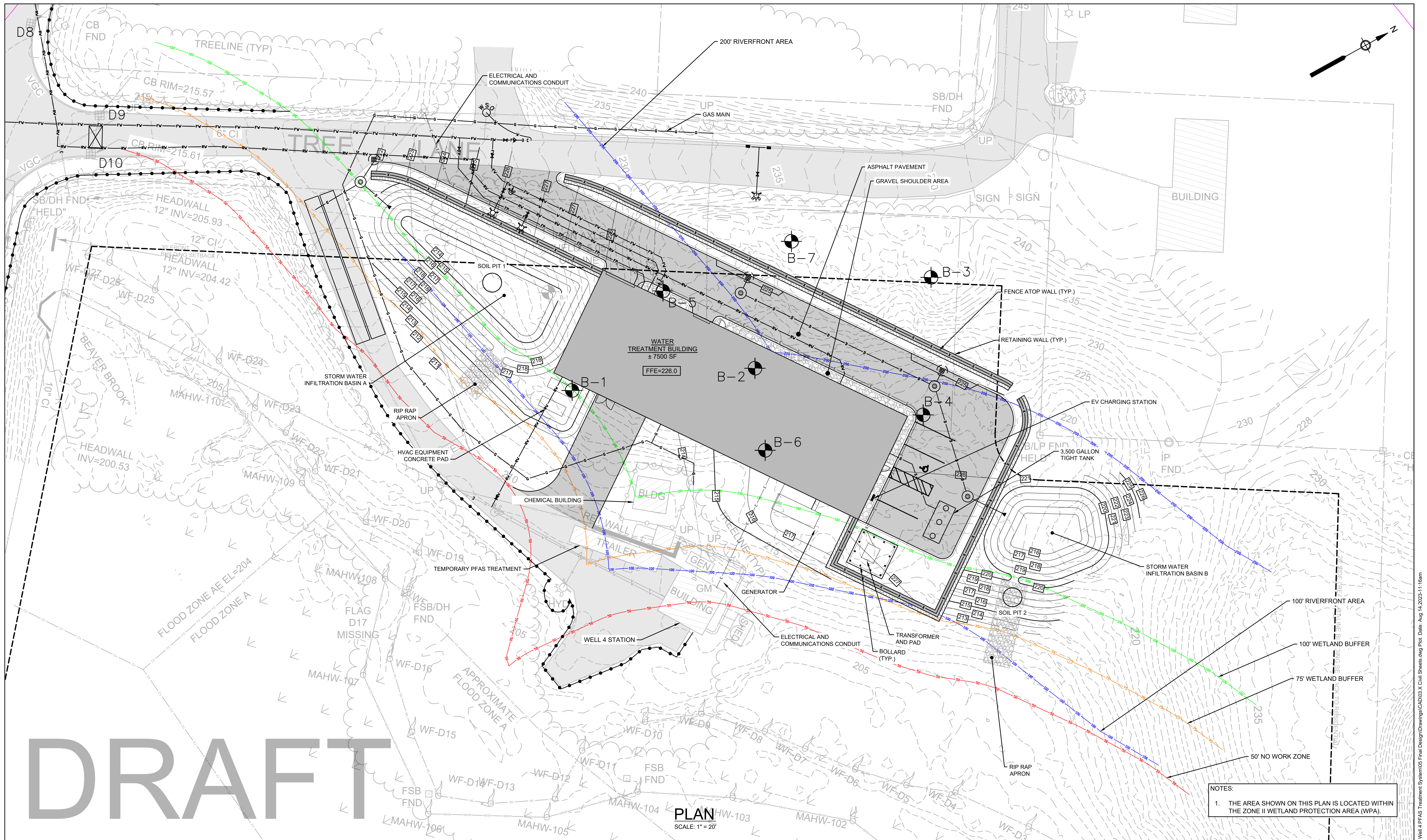
**WELLS 2, 3, AND 4 WATER TREATMENT PLANT
TOWN OF SHARON, MA**

PARTIAL REFLECTED CEILING PLAN; ROOM FINISH SCHEDULE

50% DESIGN

Sheet No.

A-13



DRAFT

NOTES:
1. THE AREA SHOWN ON THIS PLAN IS LOCATED WITHIN THE ZONE II WETLAND PROTECTION AREA (WPA).

PLAN
SCALE: 1" = 20'



ENVIRONMENTAL PARTNERS
— An Apex Company —

Scale	1" = 20'
Date	AUGUST 2023
Job No.	245-2103
Designed by	JDH
Drawn by	SBS/JDH
Checked by	SFP
Approved by	ASK

MARK	DATE	DESCRIPTION

THIS LINE IS ONE INCH LONG WHEN PLOTTED AT FULL SCALE ON A 22" X 34" DRAWING

WELLS 2, 3, AND 4 WATER TREATMENT PLANT
TOWN OF SHARON, MA

WELL 4 SITE PLAN 2

50% DESIGN
Sheet No.
C-1