



**SHARON
RECREATION**

Mission

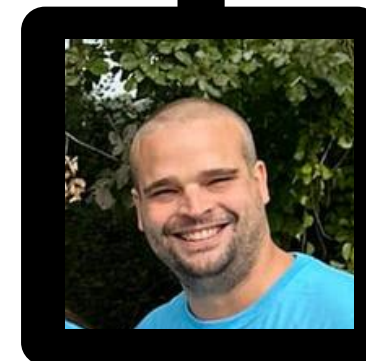
To advance parks, recreation and leisure-time activities that enhance the quality of life in Sharon. The purpose of the Recreation Department is to meet the diverse recreational, cultural, athletic and leisure-time pursuits of the residents of Sharon with a broad based comprehensive program. Recreational programs are organized to encourage participation and enjoyment and should be held at safe and well-equipped facilities on a year-round basis.



Dept Org Chart



Recreation Director,
Linda Berger



Assistant Rec Director,
Frank Livera



Admin Assistant,
Maura Palm

Some of Our Team



Our Vendors



Areas of Responsibility

Lake Operations

- Sale and administration of Beach Passes/Daily Passes
- Lifeguard/Gate Guard Supervision
- Rentals
- Special Events (Tri/3rd of July)
- Concession stand contract
- Concerts

Programs Mix Vendor/Staff

- Sports Leagues
 - Rec Basketball, Women's Softball, Kickball, Flag Football
- Vacation Programs
- Fitness Classes
- Dance Classes
- Pickleball Intro Classes
- Lego Classes
- Summer Programs
 - LetgoYourMind, MSP, Sailing
- Preschool Enrichment
 - Music, Exploration, PK Soccer
- Youth Enrichment
 - Home Alone, BLAST, Etiquette
- Sports Programs
 - Archery, Pickleball,
- Special Events

Trunk or Treat, Sharon Day, Fishing Derby, Community Wide Yard Sale, Back to School Movie Night, Power Wheels Rodeo

Financial

- Grants
- Donations
- Rothberg Scholarship
- Capital/CPC Projects
- Revolving Accounts
 - Friends of Beech Tree Park, Waterfront, Program, Kafta Sailing, Sharon Day

Facilities

- Field Permitting
- Field Feasibility Study
- Playgrounds
- Repair of Equipment
- Concession Stands

Financial - Funding Sources

General Fund (Tax Base)

- Department salaries
- Office supplies
- Utilities: electricity/gas/septic
Plumbing winterization at DS and Ames,
- Cleaning of restrooms,
- Playground maintenance
- Staff/training development
- Repairs from vandalism and aging equipment

Revolving Funds

Waterfront

Income: Sales of beach tags, daily and seasonal and student parking, Concession Stand rental, kayak storage, Triathlon, group visits/camps

Expense: Installation/removal of docks, landscaping, maintenance of concession stand, contracts with third party vendors, lifeguard supplies, bathroom supplies, geese service, awning storage, water testing, winterization of bathrooms, staffing software, and gate guard & waterfront employee salaries

Program:

Income: Session-based programming, summer programs and vendor programs, concert donations

Expense: Supplies to support programs/classes, paying vendor contracts, portable restrooms, first aid supplies, payment of bands/entertainers, part-time employee salaries

Special Project Revolving

Beech Tree Park:

Income: Donations and grants
Expenses: Payment of bands and landscaping improvements/maintenance

Square Jam/Sharon Day

Income: Donations (from local businesses) and booth fees for vendors
Expense: Payment of activities, promotional supplies, tee shirts, bands and banners

CPC/Capital Appropriations

Income: Monies allocated for projects from votes at TM
Expense: Payment of all related project expenses



Capital/CPC (since 2016)



PROJECT	ALLOCATION	REMAINING BALANCE
AMES CONCESSION STAND	\$52,000.00	\$2,815.00
AMES STREET PLAYGROUND	\$222,000.00	\$2,185.23
AMES STREET BASKETBALL COURTS	\$37,000.00	\$7,430.00
AMES SOFTBALL CEMENT PADS/BLEACHERS	\$35,539.00	\$5,909.00
COMMUNITY CENTER	\$42,225.00	\$11,741.74
AMES PLAYGROUND II	\$131,468.00	\$21,459.00
VETERANS' MEMORIAL PARK BEACH	\$84,926.00	\$813.26
EZRA SCHWARTZ PAVILION	\$40,700.00	\$787.00
VMPB PLAYGROUND	\$179,220.00	\$19,974.53
AED STATIONS (CAPITAL)	\$27,540	\$7007.86
TENNIS COURT WIND SCREEN	\$35,202.00	\$6,287.00
TENNIS COURT RALLY WALL	\$13,809	\$1,255.00
FIELD FEASIBILITY STUDY	\$24,550	\$0
PICKLEBALL COURTS AT DS	\$100,000	\$3,707.93 (waiting on invoice for lights to close)
AMES ST PLAYGROUND	\$91,786.45	\$1,650.88

Locations

📍 Ames Street



📍 Deborah Sampson



Locations

📍 Gavins Pond



📍 Boat Launch



Locations

📍 Veterans' Memorial Park Beach



📍 Community Center



📍 Beech Tree Park



Locations - Operated by other organizations

📍 Community Gardens



Sharon Community Gardens

📍 Sharon Dog Park



Friends of Sharon Dog Park





COLLABORATIONS

DPW

School Dept & Community Ed



Police/Fire Dept

Conservation Health Dept & Lake Massapoag Advisory

COA

Library

There is a lot of overlap and interaction between Recreation Department and other departments such as Sharon Schools, DPW, and Sharon Police. All field and park maintenance falls under jurisdiction of Parks Dept (under DPW umbrella). Requests come into Recreation Department for needs and is filtered to DPW Parks Dept to address. Collaboration and partnership is key!

PROGRAMS



SPECIAL EVENTS



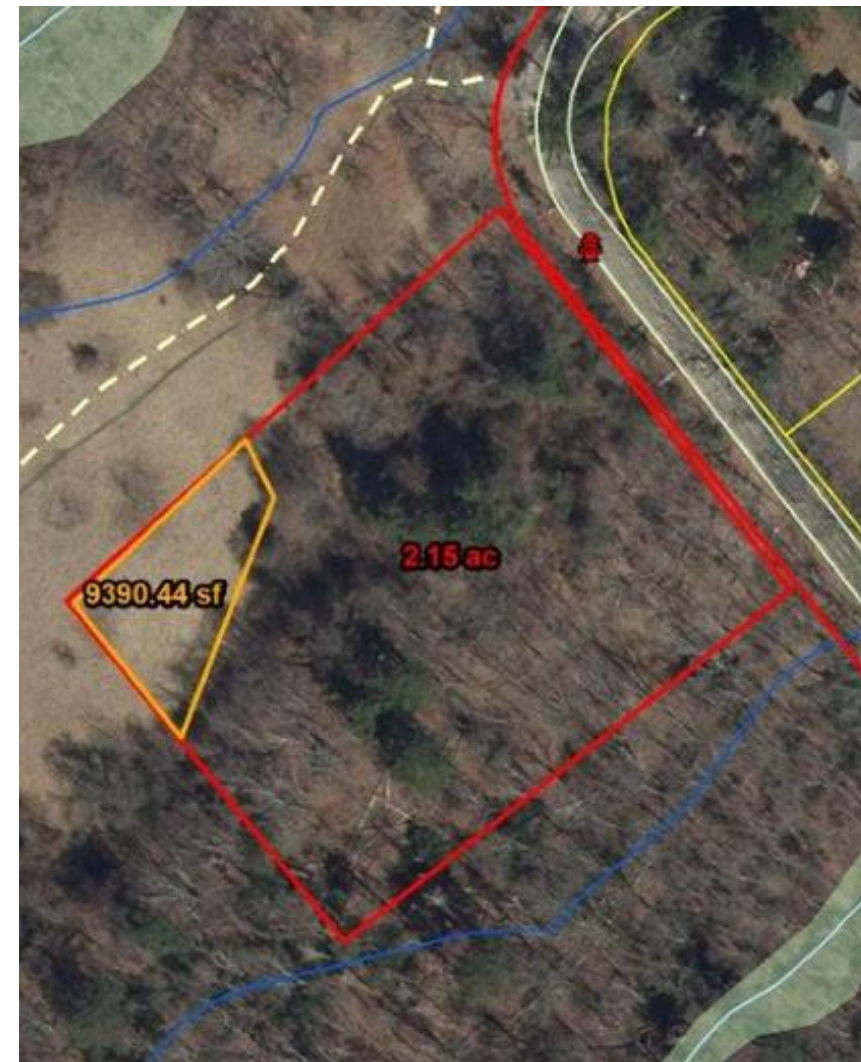
UPCOMING PROJECT REQUESTS

FY26: Requesting approximately \$1.7M to rebuild the tennis courts at Deborah Sampson.

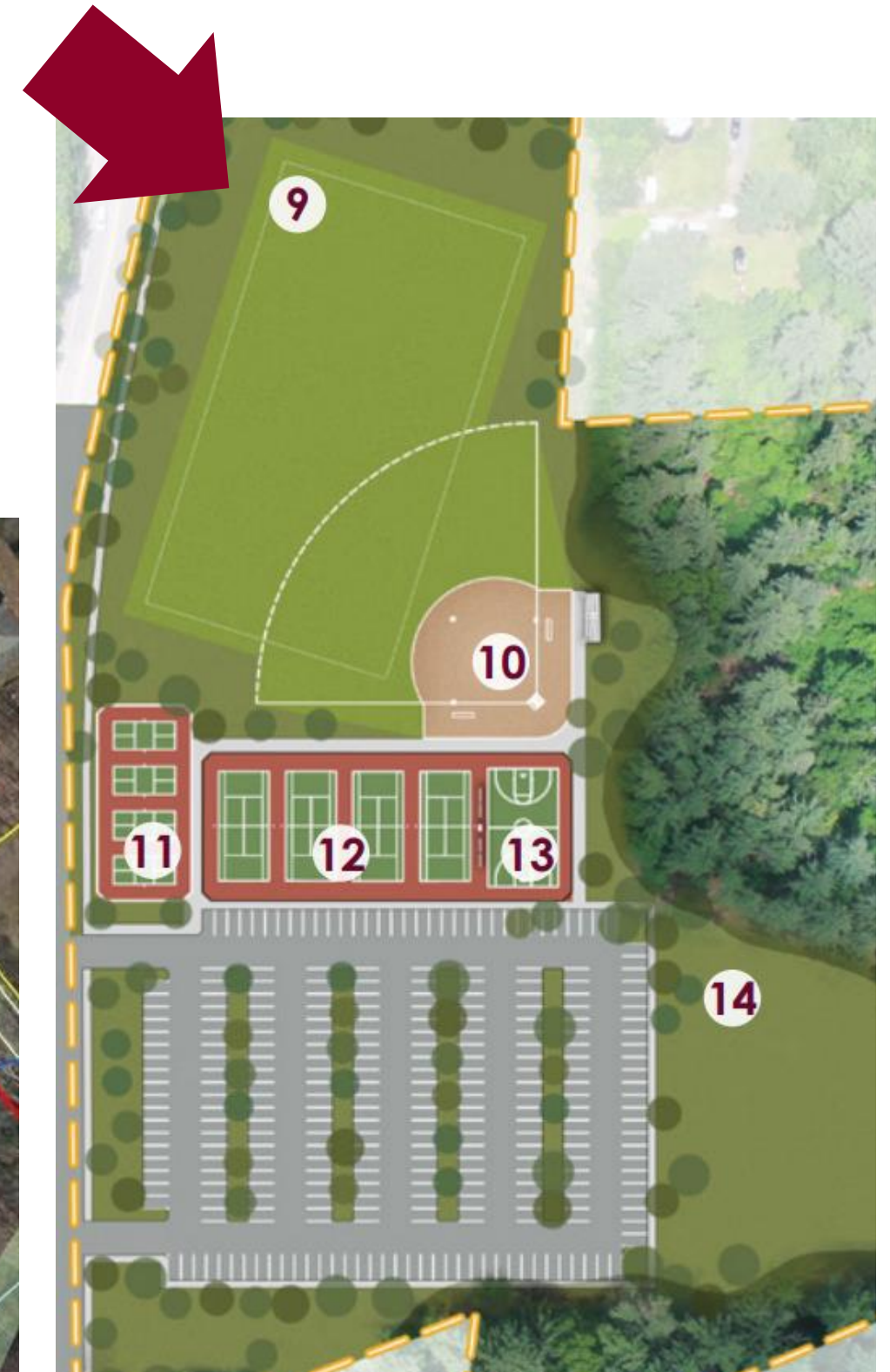
Second Request: Approximately \$76K for schematic design which will give construction plans to relocate the community gardens to Lakeview Street and develop a multipurpose playing field at Deborah Sampson.



Current Tennis Court Conditions

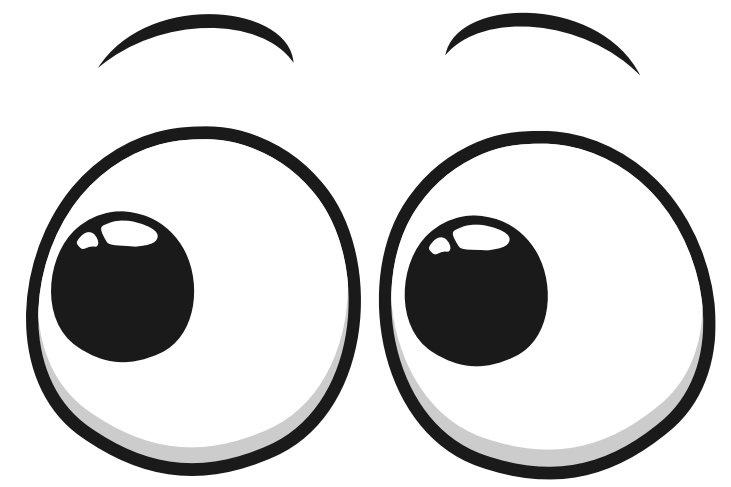


Lakeview Street



Multipurpose Field

LOOKING AHEAD



Hoping to increase staffing to include one Full-Time Program Director in coming years.

- 2013-14 Recreation offered 14 classes vs. 2022-2023 offered 55 classes/programs
- Increased Recreation Special Events by adding Back to School Movie Night, Sharon Day, Trunk or Treat, Free Friday events on School vacation weeks, Fishing Derby, Community Yard Sale & coming in 2024 - - - Chalk Art Festival.
- Added three sports leagues in addition to our robust K-12 Rec Basketball Program including Flag Football, Women's Softball, Women's Kickball

With increased staffing, will add additional programming including:

- Farmers Market, Kayak Rental, & Swim Lessons.

Bring Field Feasibility Study to fruition by: developing additional multipurpose field at Deborah Sampson, potentially reconfiguring Deborah Sampson for baseball/softball and creating two multipurpose fields at Ames. *(Full study is available online at www.sharonrec.com)*



VOLUNTEERS **NEEDED**

BECOME A REC BASKETBALL COORDINATOR/COACH

VOLUNTEER AT A SPECIAL EVENT!

COORDINATE A COMMUNITY PICK UP DAY AT THE PARK/BEACH

JOIN THE RECREATION ADVISORY COMMITTEE

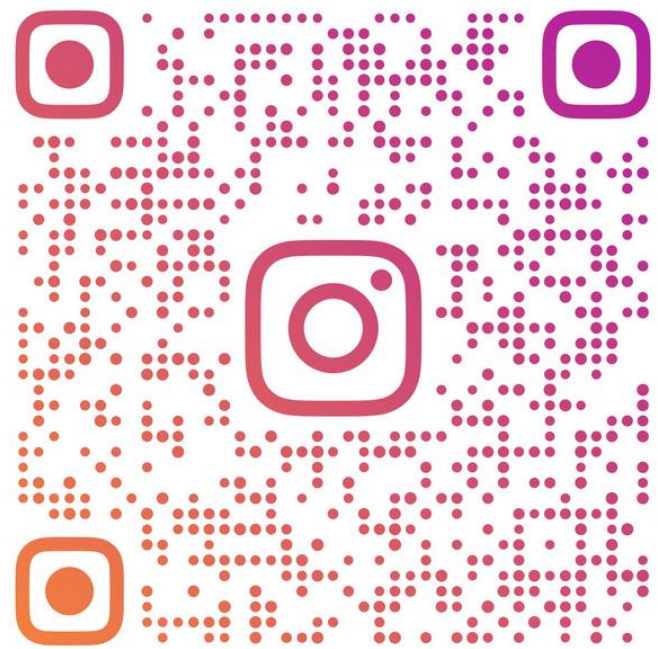
EMAIL: LBERGER@TOWNOFSHARON.ORG



HOW DO I LEARN MORE ABOUT RECREATION?



Sharon Recreation
Department



SHARONMARECDEPT



www.sharonrec.com



781-784-1530



lberger@townofsharon.org



**SHARON
RECREATION**



Thank You

