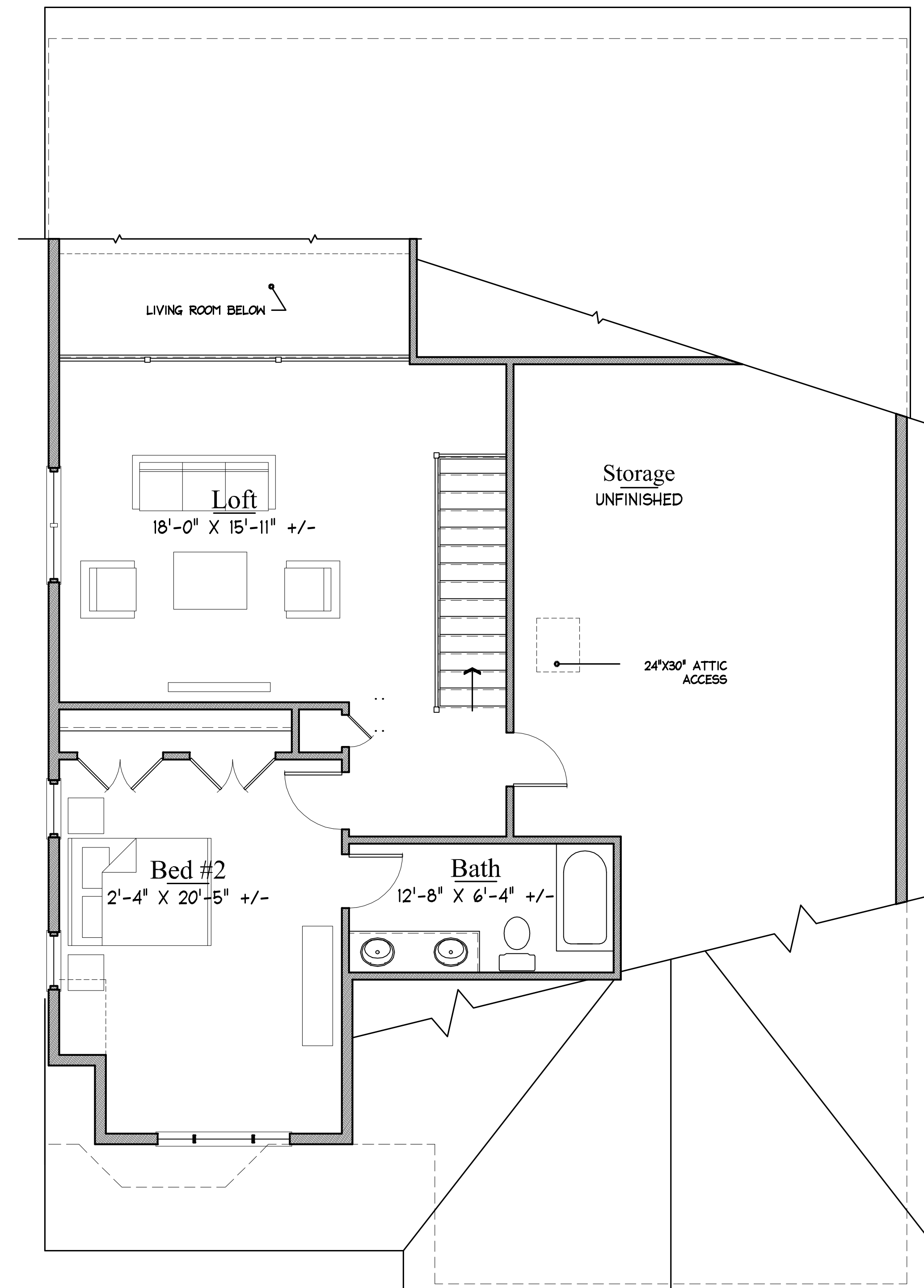


First Floor
1773 SQ. FT.



Second Floor
762 SQ. FT.

Spring Valley

Sharon, MA

November 7, 2016

The MZO GROUP
DESIGNERS ■ ARCHITECTS ■ PLANNERS
IN THE *MIQUELLE* TRADITION

335 Main Street, Suite 201 ■ Stoneham, Massachusetts 02180
Voice: 781-279-4446 ■ Fax: 781-279-4448 ■ E-Mail: mzo@mzogroup.com ■ www.mzogroup.com

© COPYRIGHT 2016, MZO ARCHITECTURAL GROUP, INC. OWNS THE COPYRIGHT IN THIS DOCUMENT. NO REPRODUCTION OR OTHER USE IS ALLOWED WITHOUT THE EXPRESS WRITTEN CONSENT OF MZO ARCHITECTURAL GROUP, INC.